

Fact Book | 2012



Preface *Fact Book 2012*

The Office of the Executive Vice President for Academic & Research Affairs is pleased to introduce the nineteenth edition of The University of Texas Health Science Center at Houston's (UTHealth) annual *Fact Book*.

Data are current as of press time and, where appropriate, align with:

- The university's Annual Financial Report;
- Certified Texas Higher Education Coordinating Board reports (enrollment, degrees conferred, faculty, medical residents);
- Performance Measures reported to the Legislative Budget Board; and/or
- Other State and UT System required reports (financial aid, research expenditures, facilities, philanthropy)

UTHealth Mission Statement

As a comprehensive health science university, the mission of The University of Texas Health Science Center at Houston is to educate health science professionals, discover and translate advances in the biomedical and social sciences, and model the best practices in clinical care and public health.

We pursue this mission in order to advance the quality of human life by enhancing the diagnosis, treatment, and prevention of disease and injury, as well as promoting individual health and community well-being.

UTHealth Vision Statement

Excellence above all in the quest to be an acknowledged leader in the collaboration to treat, cure and prevent the most common diseases of our time through education, research and clinical practice.

Please direct questions or comments regarding *Fact Book 2012* to:

The Office of the Executive Vice President for Academic & Research Affairs
7000 Fannin, Suite 1565
Houston, Texas 77030

UCT 1565 (*for intra-institutional mail*)

713.500.3192 *telephone*

713.500.3069 *facsimile*

George Stancel, PhD
Executive Vice President for Academic & Research Affairs

Deanne Hernandez
Director, Operations
Fact Book editor

The University of Texas Health Science Center at Houston is accredited by the Commission on Colleges of the Southern Association of Colleges and Schools to award certificate, undergraduate, masters, doctoral, and professional degrees. Contact the Commission on Colleges at 1866 Southern Lane, Decatur, Georgia 30033-4097 or call 404.679.4500 for questions about the accreditation of The University of Texas Health Science Center at Houston.

The University of Texas Health Science Center at Houston is an equal opportunity employer. In accordance with both state and federal laws and regulations, UTHealth will provide equal opportunity in all employment-related activities without regard to race, color, religion, sex, sexual orientation, national origin, age, disability, or veteran status.

Published February 2012

Table of Contents *Fact Book 2012*

Preface	2
The University of Texas Board of Regents	5
UTHealth School Profiles & Executive Organization	6-19
Education	
Summary of Academic Programs and Accreditation	20
Applicant Profile	21
Headcount Enrollment by Full-time/Part-time Status	22
Headcount Enrollment by Level	23
Headcount Enrollment by Ethnicity	24
Headcount Enrollment by Ethnicity (Domestic Students only)	26
Headcount Enrollment by Level, Ethnicity & Gender	28
Headcount Enrollment by Academic Program	29
Headcount Enrollment by Residency	32
Full-time Equivalent (FTE) Enrollment	34
GSBS Students by Institutional Affiliation	35
Licensure Examination Results	36
Degrees Conferred by School	37
Degrees Conferred by Academic Program	38
Degrees Conferred by Level & Ethnicity	39
Profile of Medical Residents	40
Medical School Graduating Class Specialty Choices	41
School of Dentistry Resident & Postgraduate Students	42
School of Dentistry & Medical School Applicant Scores	43
Tuition & Fees	44
Student Financial Aid Profile	45
Total Student Financial Aid Awards by School	46
Total Student Financial Aid Awards by Major Program	47
Average Student Financial Aid Awards by School	48
Average Student Debt on Graduation	49
Total Graduates by School	50
Research	
Research Expenditures by Unit	51
UT Health-Related Institutions Research Expenditures	52
Trends in UT Health-Related Institutions Research Expenditures	52
Research Expenditures by Sponsoring Agency	53
Grant Proposals by Unit & Type	54
Contract & Grant Awards by Unit & Type	55
Contract & Grant Awards by Source	56
Intellectual Property Activity	57
NIH Awards by Unit	58
Federal Awards by Agency	59
Principal Investigators by Unit	59
Sponsored Project Activity Report	60

continued **Table of Contents** *Fact Book 2012*

Patient Care

MSRDP Summary of Operations	61
UT Harris County Psychiatric Center Clinical Activity	62
Un-sponsored Charity Care	63
Medical School Outpatient Clinical Activity	64
School of Dentistry Clinical Activity: Patient Visits	65
School of Dentistry Clinical Activity: Patient Treatments	66
UT Health Services Patient Visits	66

Employees

Faculty by Full-time/Part-time Status	67
Without Salary Faculty Appointments	68
Full-time/Part-time Faculty by Rank	69
Faculty by Ethnicity & Gender	70
Faculty by Tenure Status & Gender	71
Classified Staff by Ethnicity & Gender	72
Academic A&P Staff by Ethnicity & Gender	73
Management A&P Staff by Ethnicity & Gender	74
Employees by Ethnicity & Gender	75
Full-time Equivalent (FTE) Employees by Source of Funds	76
Employees by Employment Category	78
GSBS Faculty Membership by Institutional Affiliation	79

Budget & Finance

State Funds Operating Budget	80
Total Funds Operating Budget	81
Total Funds Operating Budget by Revenue Source	82
Total Funds Operating Budget by Unit & Revenue Source	83
Total Budget Allocation by NACUBO Function	84

Philanthropy

Endowment Status	85
Endowment Trends	85
Voluntary Support	85

Facilities

Capital Equipment Expenditures by Asset Category	86
Facilities Operating Expenditures	87
Purchased Utilities	87
Space Inventory by Function	88
Space Inventory by Program	90

The University of Texas Board of Regents

source:

The Board of Regents, the governing body for The University of Texas System, is composed of nine members who are appointed by the Governor and confirmed by the Senate. Terms for Regents are scheduled for six years each and staggered so that three members' terms will usually expire on February 1 in odd-numbered years. In addition, the Governor appoints a Student Regent for a one-year term that expires on May 31.

Throughout the more than 100-year history of The U. T. System, the Board has been composed of dedicated and distinguished Texans who have been strong advocates of excellence in academic programs, scientific inquiry, and responsible public service.

Officers:

Wm. Eugene "Gene" Powell, Chairman

Paul L. Foster, Vice Chairman

R. Steven "Steve" Hicks, Vice Chairman

James D. Dannenbaum, Vice Chairman

Francie A. Frederick, General Counsel to the Board of Regents

Members with term set to expire February 1, 2013

James D. Dannenbaum

Paul L. Foster

Printice L. Gary

Members with term set to expire February 1, 2015

R. Steven "Steve" Hicks

Wm. Eugene "Gene" Powell

Robert L. Stillwell

Members with term set to expire February 1, 2017

Alex M. Cranberg

Wallace L. Hall, Jr.

Brenda Pejovich

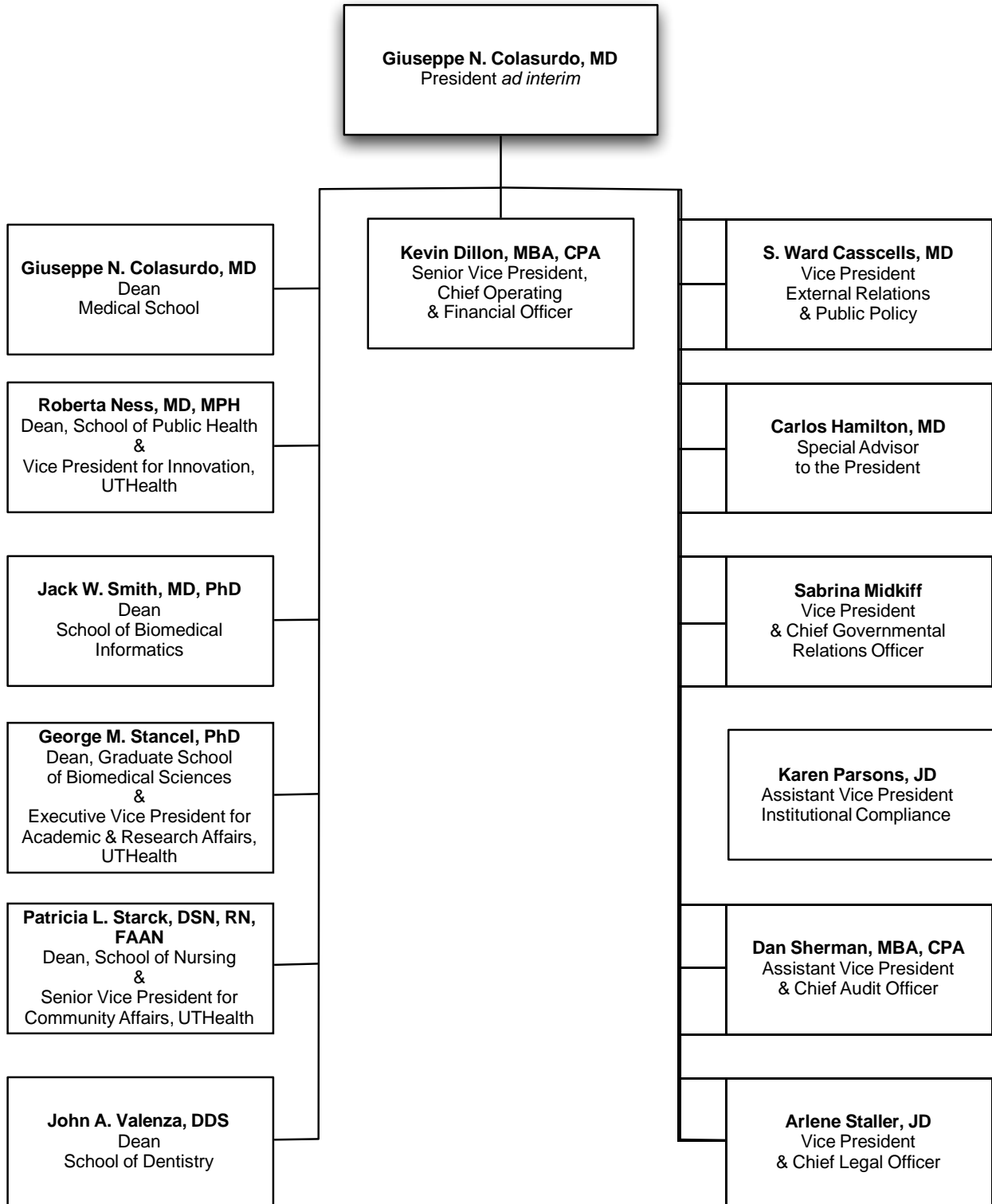
Student Regent with term to expire May 31, 2012

John Davis Rutkauskas

Each Regent's term expires when a successor has been appointed, qualified, and taken the oath of office. The Student Regent serves a one-year term.

UTHealth Executive Organization

source: [Rose Hochner](#), President's Office



School of Biomedical Informatics *Profile*

source: [Cheryl Chinen](#), School of Biomedical Informatics

History and Purpose

The School of Biomedical Informatics (SBMI) is the first school in the country devoted exclusively to graduate programs in health informatics with one of the country's most comprehensive programs in biomedical informatics. Informatics became the focus of the school in 1997, with the school's name changing in 2001 to the School of Health Information Sciences and again in 2010 to its current name to reflect its new mission. SBMI is now recognized nationally and internationally for its commitment to collaboration and interdisciplinary approaches to research, education, and entrepreneurship. The school's mission is to provide educational and research opportunities in informatics to health care professionals and biomedical scientists working as interdisciplinary teams. Biomedical research and healthcare solutions are advanced by bringing together the computer, engineering, cognitive and medical sciences. The school's interdisciplinary programs mean that breakthroughs in the lab will be translated more efficiently into quality care. Researchers will have better tools to advance treatments and cures; doctors will have better diagnostics and ways to access information; and patients will have better access to personalized care.

Instructional Programs

Currently the school offers two degrees, a master of science in health informatics (MS) and a doctor of philosophy in health informatics (PhD), as well as a dual-degree program in Public Health Informatics. A five-course Certificate of Health Informatics and distance education programs are also available.

SBMI offers interdisciplinary graduate-level courses in health informatics for students enrolled in UTHealth schools and for health professionals and scientists in the Texas Medical Center (TMC) and across the state. The MS degree focuses on the study of how health and biomedical science data are collected, stored and communicated and how the data are processed into health information and knowledge suitable for research, administrative, and clinical decision-making.

The curriculum stresses the development of interdisciplinary teams to evaluate and address the complex informatics issues that face healthcare and biomedical research. The identified issues are based on real-world problems. Students have been able to solve some of these problems during their study with faculty mentors.

The PhD program is designed for graduates to research and evaluate new regions or domains of health informatics, lead interdisciplinary teams, and effectively communicate research findings to peers and practitioners. The dual degree program with the School of Public Health further promotes collaboration and interdisciplinary activities for the two schools.

Students come from a wide variety of backgrounds with a variety of skills. Each student, along with a faculty advising committee, determines the student's curriculum from a matrix of courses. Scientists and practitioners across UTHealth, the TMC and beyond provide a real world laboratory for honing reasoning, knowledge and research skills. The programs receive strong support from UTHealth and other TMC institutions.

First focus area:

Clinical & Cognitive Informatics

Cognitive science in medicine
Clinical Translational Science
Artificial intelligence, knowledge modeling, and medical decision support
Information retrieval, data mining, and database design
Ontology
Practice guidelines and standards
Electronic medical records
Telemedicine
Public Health Informatics and bio-security Informatics
User interface design and human-computer interaction in health care
Information display and visualization
Patient safety
Informatics for extreme environments
Personal health information management

Second focus area:

Computational Biomedicine

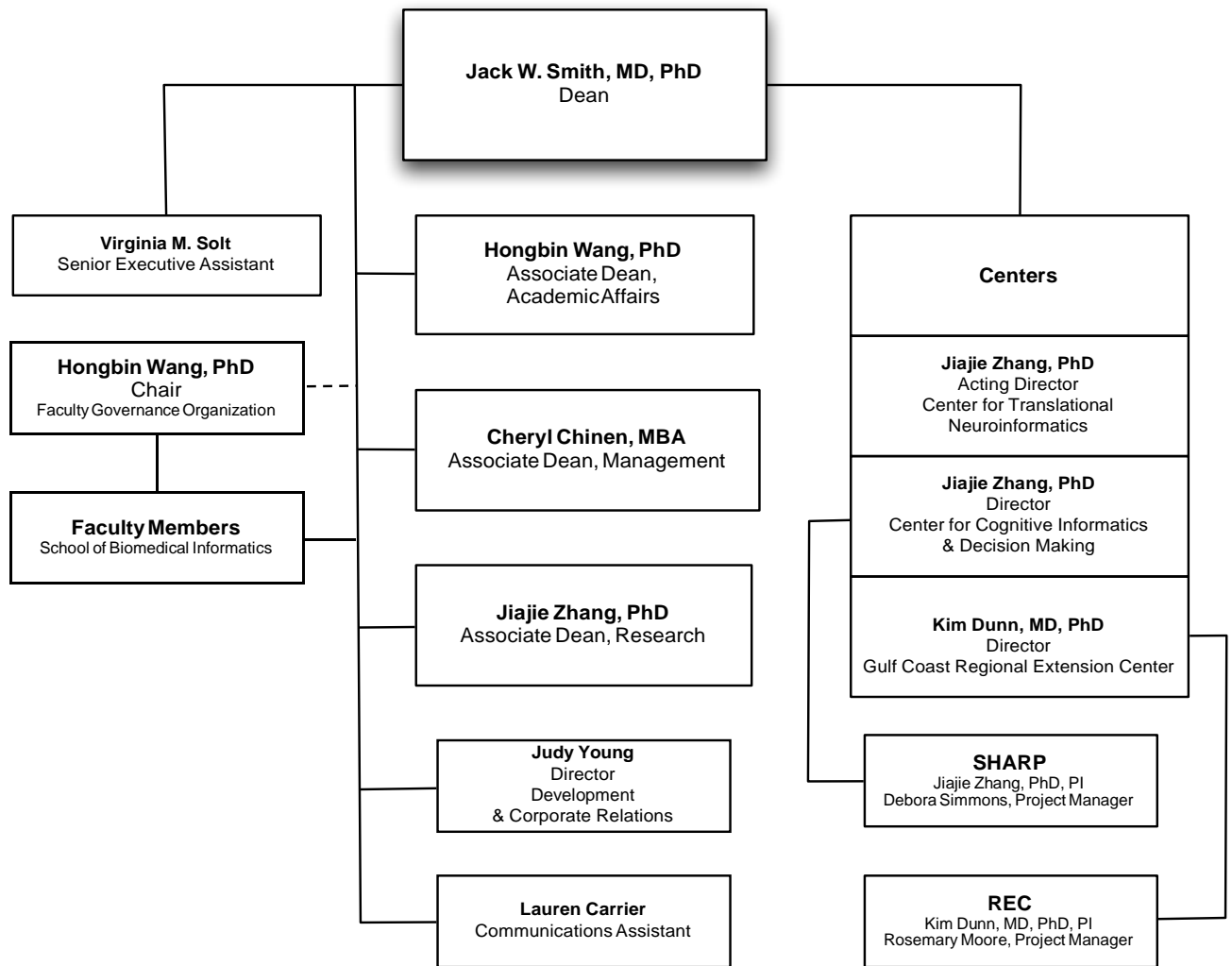
Bioinformatics
Computational biostatistics
Computational biomedical engineering sciences
Neuroinformatics
Systems biology
Modeling and simulation of biomedical systems and processes
Complex dynamic systems in biomedicine

Third focus area: Learning and Technology

Instructional research and evaluation
Educational research design
Statistics and measurement
Instructional technology
Use and evaluation
Instructional design
Learning sciences

School of Biomedical Informatics Organization

source: [Cheryl Chinen](#), School of Biomedical Informatics



School of Dentistry Profile

source: Art Jeske, DMD, PhD, School of Dentistry

History and Purpose

For more than 100 years, The University of Texas School of Dentistry (UTSD) at Houston has set the standard for oral health excellence by educating outstanding dentists and dental hygienists, discovering new oral health advancements and caring for the people of Texas. In late 2009, the School of Dentistry began construction of a new, state-of-the-art dental school in UT Research Park on the south campus of the Texas Medical Center. The UT Health Science Center at Houston (UTHealth) has committed \$155 million to the project from state, UT System and local sources. Philanthropic opportunities are available to help complete and equip the new building and provide funds for endowments, scholarships, research and community outreach.

Founded in 1905 as the privately owned Texas Dental College, UTSD was the first dental school in Texas and the first professional school in Houston. The school became part of UT System in 1943 as the University of Texas School of Dentistry and in 1955 was renamed "The University of Texas Dental Branch," a name it held until June 1, 2011, when it again became the UT School of Dentistry. In 1945, the UT System Board of Regents authorized creation of the Dental Hygiene Program as part of UTSD. The first dental hygiene class was admitted in 1955.

Fulfilling the Mission: Education

The School of Dentistry offers 10 accredited programs: DDS, dental hygiene, two primary care general residency programs and specialty programs in endodontics, oral and maxillofacial surgery, orthodontics, pediatric dentistry, periodontics, and prosthodontics. The school also offers a DDS/PhD in collaboration with the UT Graduate School of Biomedical Sciences, and an MD degree through the UT Medical School with an oral and maxillofacial surgery certificate.

The School of Dentistry has integrated a focus on cultural competency, diversity and inclusion into all four years of the undergraduate dental curriculum, built on the foundation of the American Medical Student Association's Achieving Diversity in Dentistry and Medicine guidelines. One example of this commitment to diversity is serving as a site for The Robert Wood Johnson Foundation's Summer Medical and Dental Education Program. This intensive, personalized preparatory program for pre-dental and pre-medical students has the ultimate goal of increasing the number of under-represented and minority healthcare practitioners in Texas.

Fulfilling the Mission: Research

Researchers at the School of Dentistry work in diverse areas to develop new knowledge applicable to the prevention, diagnosis and treatment of oral and systemic diseases. Current areas of investigation are:

- salivary biomarker profiles for diagnosing local and systemic disease
- regenerating craniofacial structures through tissue engineering and advanced imaging
- mechanisms of mucosal immunity and autoimmunity
- molecular imaging of oral and other types of cancer
- applying information sciences to oral health and disease
- advanced imaging of craniofacial structures

The School of Dentistry is home to the Proteomics Core of the Center for Clinical and Translational Sciences. The Proteomics Core is a resource for training and assistance in designing experimental protocols for biomarker discovery and validation using state-of-the-art proteomic techniques, from mass spectroscopy to protein quantification. UTSD also recognizes its role in preparing the next generation of scientists. Dental students are encouraged to participate in research projects, and UTSD research programs support the master's level research of dental students receiving advanced education in endodontics, orthodontics, pediatric dentistry, periodontics, and prosthodontics. In 2008, UTSD became part of a national consortium working with the Armed Forces Institute for Regenerative Medicine to find ways to rapidly grow new tissue for craniofacial reconstruction for wounded soldiers.

Fulfilling the Mission: Patient Care/Community Service

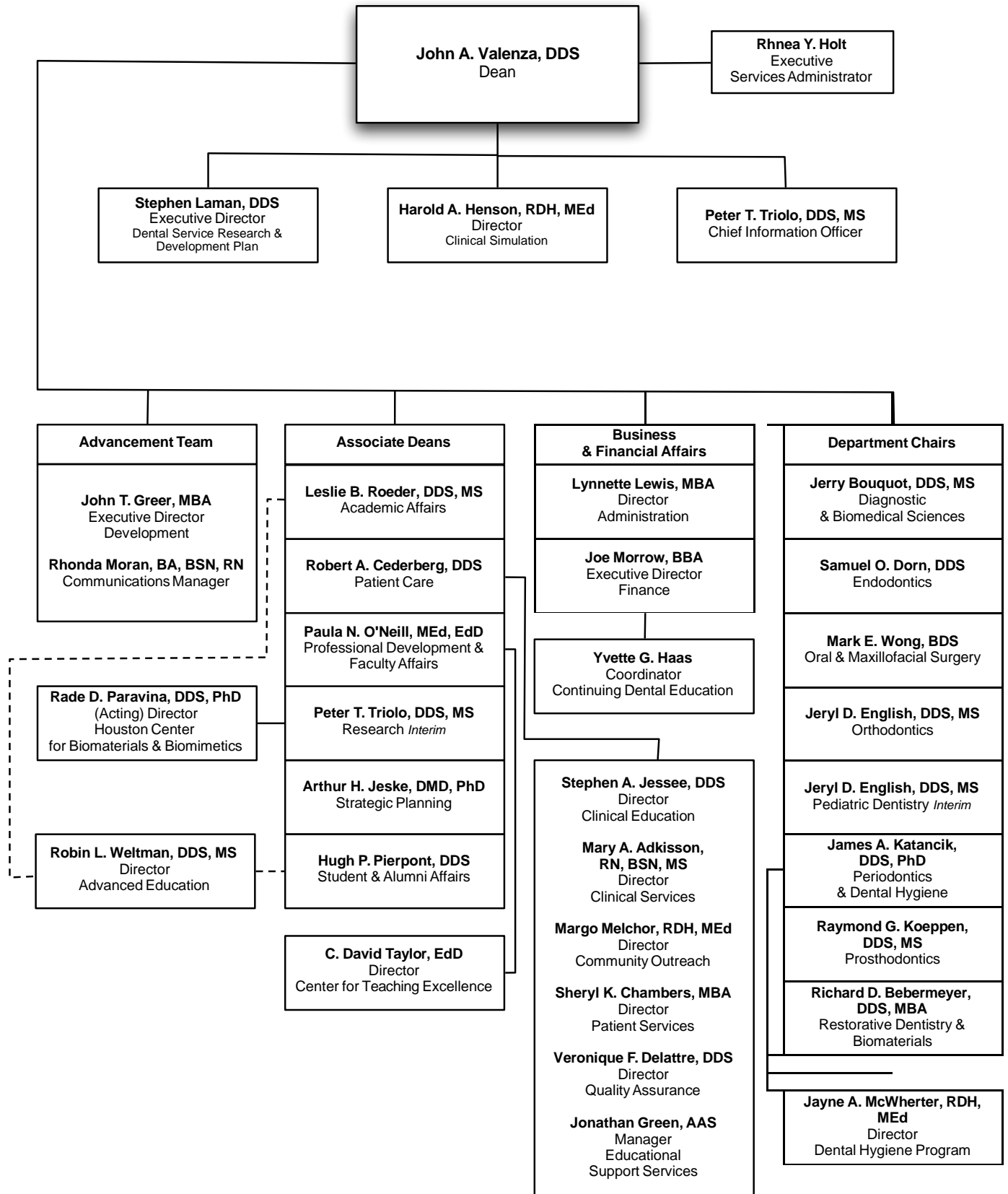
UTSD students gain clinical skills in onsite clinics, at affiliated hospitals and through community outreach projects. The school has affiliations with nine hospitals, 48 HISD schools and more than 30 clinics, community agencies and long-term health care centers. As the only dental school in southeast Texas, the School of Dentistry is a primary source of quality oral health care for low-income families, the traditionally underserved, and for patients with special needs and/or medical co-morbidities.

Facilities

The School of Dentistry is housed in a 56-year-old, six-floor building located within the Texas Medical Center. Features include basic science laboratories, lecture rooms, an auditorium, a library and learning resources center, a clinical simulation and learning center, a surgical oral pathology laboratory, a faculty practice clinic, faculty offices, clinics, administrative offices, and service and mechanical areas. The building also accommodates clinical research and continuing education.

School of Dentistry Organization

source: Art Jeske, DMD, PhD, School of Dentistry



Graduate School of Biomedical Sciences *Profile*

source: [Linda Carter](#), Graduate School of Biomedical Sciences

History and Purpose

Mandated by the Texas Legislature, the mission of UT Graduate School of Biomedical Sciences (GSBS) is to train and educate research scientists and scientist-educators, to generate new knowledge in the biomedical sciences that will be translated into improved health, and to increase public understanding of science.

GSBS trains all the future PhD, MD/PhD, and MS biomedical scientists from UTHealth and UT MD Anderson Cancer Center-- in essence, the school provides for the workforce needs of Texans and the nation and helps solve the health challenges of the future. Originally established as the academic arm of UT MD Anderson Cancer Center (MDACC), GSBS has become an important academic bridge between several Texas Medical Center institutions. The school links graduate education at UTHealth and MDACC as well as Texas A&M Institute of Biosciences and Technology (Texas A&M IBT).

Through its highly collaborative programs, GSBS adopted an interdisciplinary approach to graduate education that provides broad-based training in the biomedical sciences and in-depth training in the area of a student's thesis and dissertation research. Following a basic core of required courses, students may choose from 14 formal biomedical sciences programs, all of which provide the opportunity to design a highly individualized, rigorous degree plan of study. This flexible approach provides both depth and breadth in training, and attracts some of the best and brightest students and faculty resulting in the growth of an immense intellectual resource for the state of Texas.

Instructional Programs

The vast Texas Medical Center faculty and facilities are at the fingertips of GSBS students. As listed in the catalog, areas of study include biochemistry, biomathematics and biostatistics, cancer biology, cell biology, experimental therapeutics, genes and development, human and molecular genetics, immunology, medical physics, microbiology and molecular genetics, molecular biology, molecular carcinogenesis, molecular pathology, neuroscience, and, virology and gene therapy. In addition there are two specialized master degree programs: genetic counseling and medical physics.

For the most recently completed academic year, there were 601 faculty. This large and distinguished group includes numerous recipients of national honors, awards and professional recognition. Faculty from our combined participating institutions consistently receive more than \$280 million in research support annually from the National Institutes of Health, giving them (and the GSBS) a rank in the top 5 percent of NIH funding in the world.

The current student body of 572 includes approximately one-third of its population from Texas, one-third from other parts of the United States, and one-third who are international students, with 56% women and 44% men. GSBS provides students with nationally competitive stipends, health benefits, and sponsorship of tuition and fees, along with numerous opportunities for additional scholarships and fellowships based on scholastic excellence and research achievement.

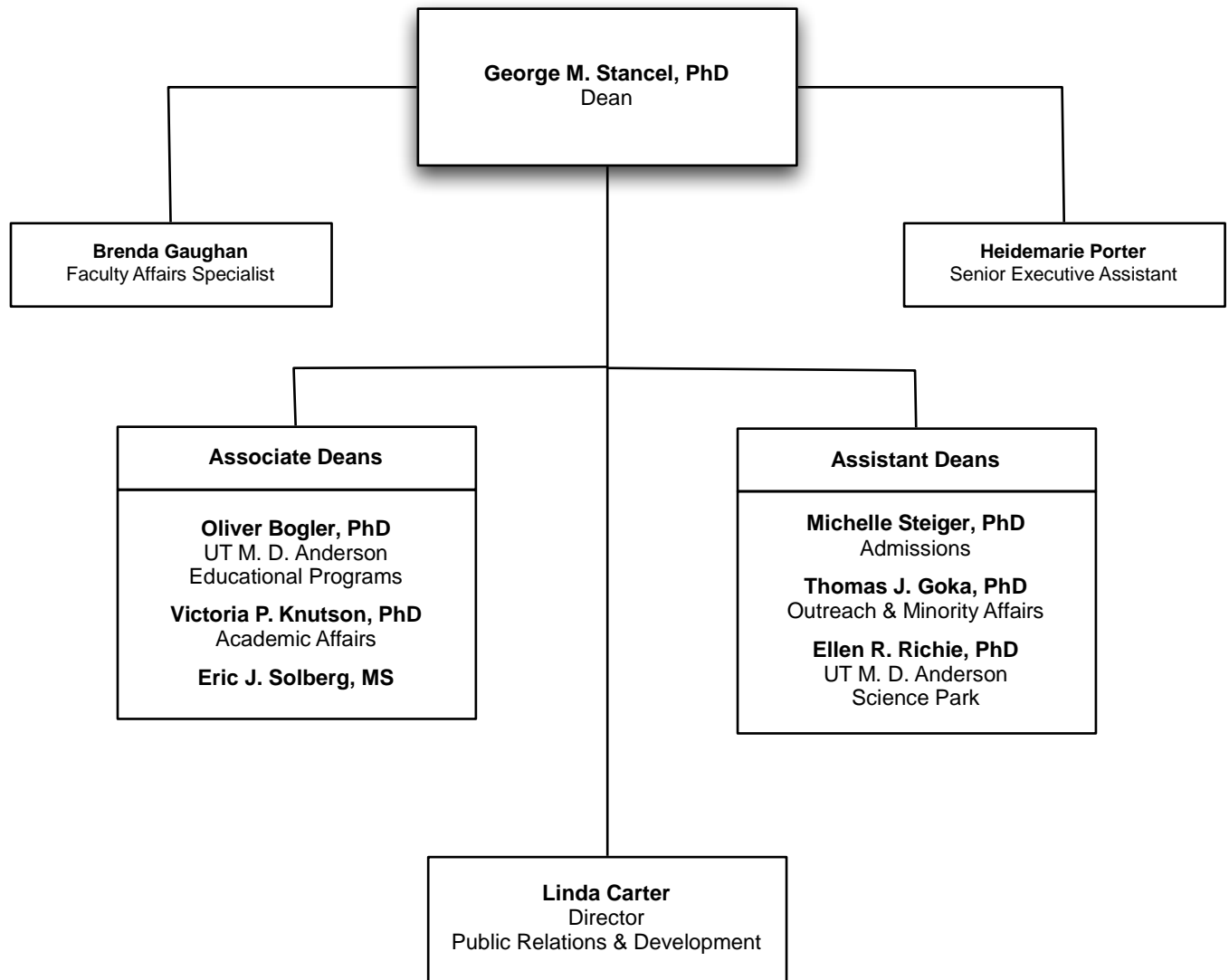
Facilities

The Graduate School, including the Dean's Office and Administrative personnel, is located in the George and Cynthia Mitchell Basic Sciences Research Building where it is housed in the June & Virgil Waggoner Academic Hall. Complete with state of the art classrooms, computer lab, auditorium, and telecom capabilities for beaming classes and lectures around the globe, it is geared for a growing and dynamic student population.

The research facilities and related resources available to GSBS students are unmatched anywhere in the world. The collaborative nature of the graduate school, with world-class faculty from UTHealth, MD Anderson Cancer Center and Texas A&M IBT, is expanded throughout the Texas Medical Center – the largest medical center in the world with 21 academic institutions and 14 hospitals. The graduate school has developed academic arrangements (including shared research and classroom facilities) with other institutions both individually, and through the Gulf Coast Consortium (GCC) that includes the region's most prominent academic institutions – MD Anderson, UTHealth, University of Texas Medical Branch, Rice University, Baylor College of Medicine and the University of Houston. GSBS students and their faculty mentors also have access to more than 60 core laboratory facilities and specialized instrumentation through these and other collaborative agreements. During the past decade, more than 2 million sq. ft. of research space has been added to UTHealth and MDACC, including the continued, joint development of the University of Texas Research Park, designed to foster major collaborative efforts and link academic and commercial research as partners in molecular imaging, drug discovery and development, diagnostics, and other translational research opportunities. This expansion includes several new centers and institutes that provide students with additional collaborative research environments across traditional departmental and programmatic boundaries.

Graduate School of Biomedical Sciences Organization

source: [Linda Carter](#), Graduate School of Biomedical Sciences



Medical School Profile

source: [Darla Brown](#), Medical School

History and Purpose

On June 13, 1969, The University of Texas Medical School at Houston was created by an act of the Legislature and an appropriation for its initial cost was made to be effective September 1, 1969. The mission of the Medical School is to provide the highest quality education and training of future physicians for the state of Texas, in harmony with the state's diverse population; to conduct the highest caliber of research in the biomedical and health sciences; and to provide exemplary clinical services.

Instructional Programs/Joint Programs

Doctor of Medicine

The Medical School program leading to a medical doctor degree has two primary components: two years of basic science study and two years of clinical experience. The basic science years, with the second year designed as a bridging year, are devoted to preparing the student for the clerkship experiences of the third and fourth years. Each student has a faculty adviser who helps devise the student's educational sequence and set career goals and postgraduate educational plans. An alternate pathway program, entered during the first year, allows a student to complete the first year of basic science courses in two years.

Doctor of Medicine/Doctor of Philosophy

The Medical School and the Graduate School of Biomedical Sciences participate in a combined program leading to the MD and PhD degrees. This program is sponsored and supported by the health science center and UT M D Anderson Cancer Center, is administered by an MD/PhD committee, and involves faculty from both institutions. The requirements for the program meet the general requirements of both degrees in a flexible six-year program.

Doctor of Medicine/Master of Public Health

The Medical School and the School of Public Health participate in a combined program leading to the MD and the MPH degrees. The program is integrated throughout a five-year period with a typical program participant spending a year working exclusively on the MPH with the possibility of concurrent enrollment for the completion of some requirements. The requirements established for the program meet the general requirements for both degrees.

Doctor of Medicine/ Oral and Maxillofacial Surgery Residency (MD/OMS)

Both a 4-year and 6-year Advanced Education Program in Oral and Maxillofacial Surgery is offered through the Medical School. Each program prepares practitioners to treat diseases, injuries, and defects involving both the functional and aesthetic aspects of the hard and soft tissues of the oral and maxillofacial region. The basic prerequisites for both 4 and 6-year programs are a DDS or DMD degree from an accredited dental school and National Dental Boards Parts I & II.

Master of Science in Clinical Research

In August 2002, the Medical School began offering a master's degree in clinical research. This degree program is designed as a focused, flexible, and affordable program to train clinical investigators in designing and conducting patient-oriented research that is of exemplary quality. The curriculum accommodates clinicians' busy schedules; classes meet one afternoon a week. The degree can be completed in two to four years depending on the amount of time a student devotes to the program. Students may choose one of two tracks – a patient-based clinical research track and a translational research track.

Reciprocal Agreements

Through reciprocal agreements, students at other UT System components, Rice University, Baylor College of Medicine, Texas Women's University, and the University of Houston may take graduate courses for credit at the health science center. In addition, health science center graduate students may take courses for credit at any of the above institutions. Mechanisms for payment of tuition or registration fees vary according to the individual institution.

Facilities

The nine-story Medical School Building is connected on the south end to a six-story research building, the Medical School Expansion (MSE), which replaced the original John Freeman Building. On its north side, the building bridges Ross Sterling Avenue to form one continuous structure with Memorial Hermann - Texas Medical Center. The Medical School Building contains offices, laboratories, classrooms, lecture halls, study areas, educational and biomedical communications support areas, student lounges, and administrative suites. The Medical School leases space in the nearby Jesse Jones Library Building for administrative functions, departmental functions, and clinical research. The top two floors of the MSE are devoted to a state-of-the-art vivarium, and the first four floors are dedicated to research. Physician faculty provide the majority of their outpatient care in the UT Professional Building, which is located across the street from the Medical School.

Affiliated Hospitals

Primary affiliations are with Memorial Hermann – Texas Medical Center and the Lyndon B. Johnson General Hospital of the Harris County Hospital District. Other major affiliates include UT M D Anderson Cancer Center, UT Harris County Psychiatric Center, and the Texas Heart Institute/St. Luke's Episcopal Hospital.

Group Practice

The *Patient Care* section includes information on the Faculty Practice Plan (MSRDP), UT Physicians, and Affiliated Medical Services.

School of Nursing *Profile*

source: [David Bates](#), School of Nursing

History and Purpose

The University of Texas Health Science Center at Houston School of Nursing, established in 1890 as part of the John Sealy Hospital Training School for Nurses in Galveston, is one of the oldest schools of nursing in the southwestern United States. The baccalaureate nursing program of the UT System expanded to Houston in 1972, when nursing courses were offered in Houston. This was the same year that UTHealth came into being. The UT School of Nursing was organized in 1972 and began offering the master of nursing degree in the same year. In 1976, the system structure dissolved and the School of Nursing was reorganized under the control of the health science center. The School initiated the Doctor of Science in Nursing degree program in 1995 and the Doctor of Nursing Practice degree program in 2006.

Instructional Programs

Bachelor of Science in Nursing

The School of Nursing offers an undergraduate program leading to the degree of bachelor of science in nursing (BSN). The undergraduate program is designed for students who wish to enter the profession of nursing and for nurses who have earned an associate degree or diploma in nursing and desire to obtain the baccalaureate degree. The school offers an accelerated BSN for second-degree students. In summer 2010, the School began offering the “**Pacesetters**” option in the four-semester Accelerated BSN curriculum. For 50 students, the first three semesters in the Pacesetters program will be classroom, simulation and limited clinical studies. During the final semester, Pacesetters will have full-time clinical rotations over 16 weeks to truly “live the life of a nurse.” The more intense clinical experience in the Pacesetters option is intended to produce a more “job-ready” BSN graduate.

Master of Science in Nursing

The master's program (MSN) is designed for nurses who have the baccalaureate degree in nursing and wish to prepare for advanced practice in a specialized area with role preparation as clinical specialists, educators, administrators, or nurse practitioners.

Six program options are available in the MSN degree program:

- Acute Care Nursing
- Adult/ Gerontology
- Family Nurse Practitioner
- Nurse Anesthesia
- Nursing Leadership and Administration in Health Systems
- Nursing Education

MSN/MPH

A cooperative degree option of MSN/MPH is offered jointly by the School of Nursing and School of Public Health. Post-master's certification courses are also available.

Doctor of Philosophy in Nursing

In 1995, the school was approved to implement a doctor of science in nursing (DSN) degree program. This research doctoral degree title was changed to the Doctor of Philosophy (PhD) degree in September 2007 for past, present and future graduates.

Doctor of Nursing Practice (DNP) Program

The UT School of Nursing at Houston was the first in Texas to offer a Doctor of Nursing Practice (DNP) degree and graduated the first DNP class in the state in May 2009. The DNP degree program is a cutting-edge *practice doctorate* that prepares advanced practice nurses with depth and breadth of knowledge and competencies to be clinical scholars recognized for outstanding direct patient care and leadership in nursing practice and health care organizations. Students develop high-level expertise in evidence-based practice and translation of evidence to individuals and populations using the latest knowledge, technology, and informatics to support new models of care delivery and quality patient outcomes. This post-master's degree program admits nurse practitioners, clinical nurse specialists and nurse anesthetists. Both part-time and full-time options are available. Although most students are admitted once a year in the fall, applications are processed throughout the year. The curriculum includes 46 credit hours and is designed to meet the educational needs of busy, working advanced practice nurses.

Facilities and Affiliations

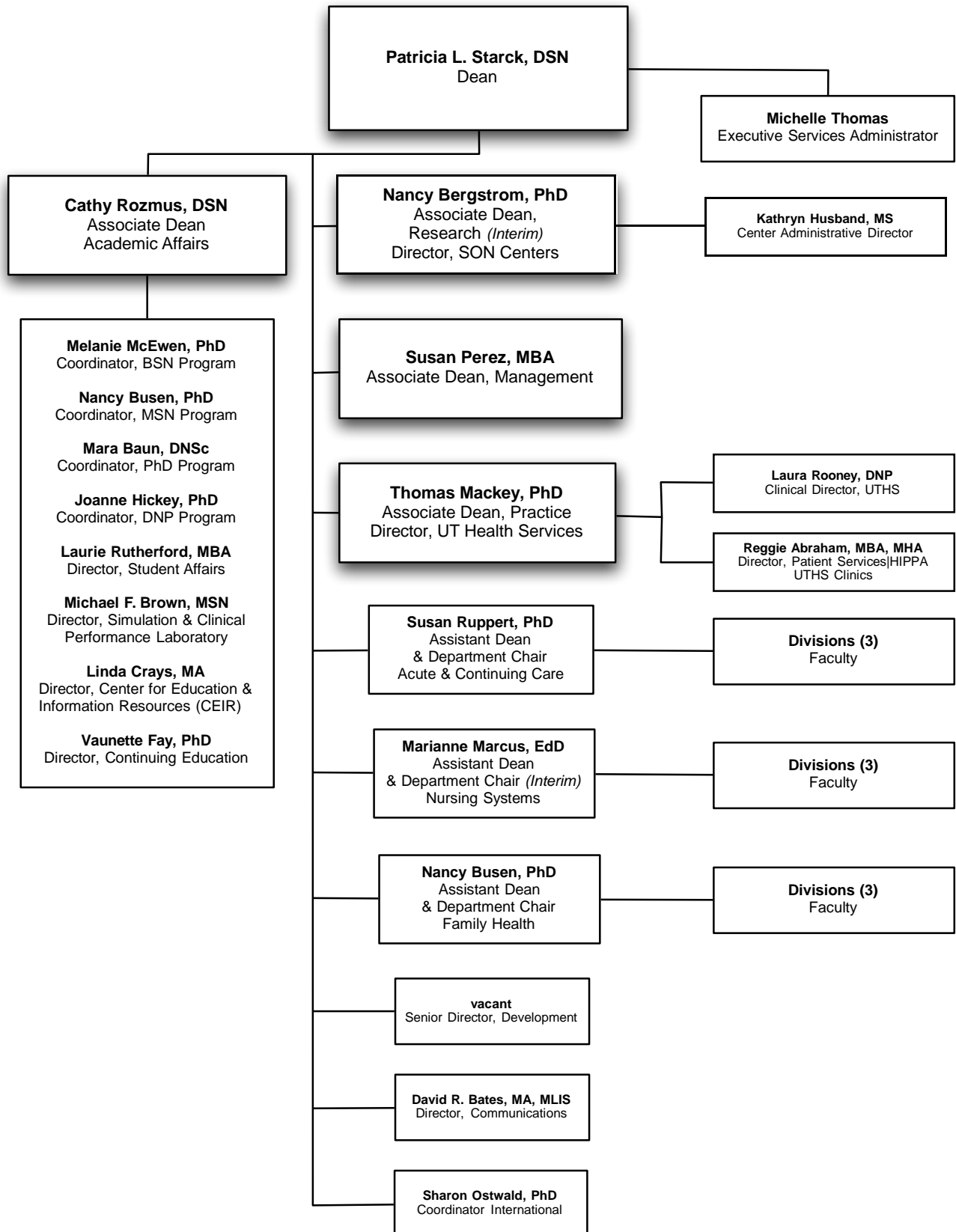
Clinical learning experience is available within other UT components in the Texas Medical Center and in the broader community. Affiliate institutions include: the Memorial Hermann Healthcare System, St. Luke's Episcopal Hospital, Texas Children's Hospital, St. Joseph Hospital, TIRR Memorial Hermann, UT Harris County Psychiatric Center and other health care facilities. Students also have opportunities for learning experiences in neighborhood health centers, nursing homes, day care centers, city and county health departments, mental health facilities and physicians' offices and clinics.

A unique opportunity for clinical training is offered by UT Health Services (UTHS), established in 1991.

UT Health Services is located at 7000 Fannin, 16th floor. This clinic provides comprehensive primary care across the life span, occupational medicine, health education, travel medicine and laboratory services to individuals within the university and to the larger community. The providers are nurse practitioners, and a physician periodically is available in clinic to meet any additional medical needs. Contact 713-500-3267 or go to www.UTHealthservices.com for more information.

School of Nursing Organization

source: [David Bates](#), School of Nursing



School of Public Health *Profile*

source: [Shon Bower](#), School of Public Health

The University of Texas School of Public Health has been making health happen by protecting and transforming the health of people in Texas, across the nation and around the world since 1967. With six campuses throughout the state, the school has established a strong reputation as a leader in public health. In addition to being nationally ranked, UTSPH is the #1 ranked program in health promotion and prevention and is a premier program for students interested in genetics, epidemiology and disease prevention.

The School has four divisions of study: Biostatistics; Epidemiology, Human Genetics and Environmental Sciences; Management, Policy and Community Health; and Health Promotion and Behavioral Sciences. There are also thirteen research centers within the school focusing on specialized research needs in the diverse areas of public health.

History

Authorized in 1947, the Texas State Legislature appropriated funds for the UT School of Public Health in 1967. The first student was admitted in 1969. Enrollment grew by leaps and bounds during the first 10 years, a testimony to the previously unfulfilled need for public health professionals.

By the end of 2010, over 5,500 students graduated from the school. Approximately 50% of the school's graduates work in Texas with the remainder addressing public health issues in the US and around the world.

Locations

The main campus of the school is located in Houston at the world renowned Texas Medical Center. The main structure, the Reuel A. Stallones building, was named for the school's first dean. The 10-story, 220,000 gross-square-foot building is located in a park setting with outstanding library, classroom, computer and research laboratory facilities. The UT School of Public Health is one of the only schools of public health to have a dedicated public health library on site. The school's location in the Texas Medical Center allows students and faculty to collaborate in research and service with many outstanding health related institutions in the world's largest medical center, as well as in the local community.

To address the need for graduate level public health education across the state of Texas, Regional Campuses were established in San Antonio (1979), El Paso (1992), Dallas (1998), Brownsville (2001), and Austin (2007).

Degree Programs

The University of Texas School of Public Health offers four degree programs leading to the skills necessary for public health careers. Professional degrees can be used for practicing public health outside of higher education – the Master of Public Health (MPH) and the Doctor of Public Health (DrPH). Academic degrees are primarily used for teaching and research – the Master of Science in Public Health (MS) and the Doctor of Philosophy in Public Health (PhD).

Students learn to conduct research on important public health concerns at the UT School of Public Health while working with faculty teams who uncover answers to urgent public health issues.

MPH - Master of Public Health

The Master of Public Health (MPH) degree is the basic professional degree in the field. It is required for many supervisory and managerial positions in public health and is recommended for many others. Students are admitted to one of the Divisions or Regional Campuses through which they complete a series of courses that cover the breadth of public health and develop competencies appropriate for their elected discipline. Many courses and educational activities are available to qualified students across all disciplines.

The majority of full-time students take approximately 18 to 24 months to complete the degree. Requirements of the MPH degree are: completion of coursework; a planned, supervised, and evaluated practice experience (Practicum); and a culminating experience demonstrating a substantial knowledge of public health. The culminating experience may take the form of a thesis or report.

DrPH - Doctor of Public Health

The Doctor of Public Health (DrPH) degree signifies distinguished scholarly accomplishment in the professional field. It is primarily designed for those who plan careers involving professional practice, teaching or research. Students will be affiliated with one of the four Divisions; however, courses may be taken in any Division.

DrPH programs are available at regional campuses as well as at the main campus in Houston. Students at the main campus can choose from five areas of primary study.

In order to complete a DrPH degree, students are required to complete one major and minor area of study in one of the five public health disciplines and one public health breadth area. For completion of the degree, students must complete all required coursework, a practicum experience, a qualifying exam and a dissertation.

MS - Master of Science

The Master of Science (MS) degree signifies academic accomplishment in a public health discipline and is offered to those who plan careers in teaching and research. It is only offered at the Houston campus within the following fields of study: Biostatistics and Epidemiology. The M.S. student is expected to focus in one field of study while gaining an understanding of the interrelations within the public health disciplines.

Students are encouraged to draw upon the resources of the school but may also work with faculty at other institutions of higher learning in Houston. The academic plan will be guided by the faculty advisor, the student, and the Advisory Committee to meet the student's specific educational goals. A student elects one field as a major and selects another public health discipline as a minor area of study. The majority of full-time M.S. students take at least two years to complete all degree requirements – coursework and a thesis.

PhD - Doctor of Philosophy

The Doctor of Philosophy (PhD) degree in Public Health represents outstanding scholarly attainment and signifies a capacity for independent study. It is primarily a research and teaching degree.

PhD students select one major and one minor area in addition to one public health breadth area to study. PhD candidates must complete coursework, a qualifying exam, and an original research dissertation.

Concentrations

Any student in a degree program can choose to focus their studies in one of several available concentrations. A concentration is defined as a problem-based area that spans disciplinary fields and therefore draws upon faculty expertise from two or more divisions.

Concentrations are supported by a specific curriculum and consist of 9-14 credit hours of coursework. The concentration will be noted on transcripts but not on a final diploma.

Concentrations are open to students at all campuses. The areas of concentrations available to students are: Global Health; Health Disparities; Leadership; and Maternal and Child Health.

Dual Degree Programs

The University of Texas School of Public Health collaborates with many universities to provide our students every opportunity to expand their knowledge base and achieve advanced degrees. The following dual degree programs are currently being offered.

- JD/MPH - University of Houston Bates Law School
- MD/MPH - The University of Texas Medical School at Houston
- MD/MPH - The University of Texas School of Medicine at San Antonio
- MD/MPH - Baylor College of Medicine
- MD/MPH - Texas Tech University, Paul L. Foster School of Medicine, El Paso
- MGPS/MPH - The University of Texas at Austin LBJ School of Public Affairs
- MPA/MPH - The University of Texas at Austin LBJ School of Public Affairs
- MS/MPH - The University of Texas School of Biomedical Informatics
- MSN/MPH - The University of Texas School of Nursing at Houston
- MSW/MPH - University of Houston School of Social Work
- MSSW/MPH - The University of Texas at Austin School of Social Work
- MSSW/MPH - The University of Texas at Arlington School of Social Work
- MBA/MPH - The University of Texas at Brownsville/Texas Southmost College School of Business
- MBA/MPH - The University of Texas at San Antonio College of Business
- PhD/MPH - The University of Texas School of Biomedical Informatics

Non-Degree Programs

The UT School of Public Health offers opportunities for education and training that do not lead to a public health degree. Non-degree programs provide an opportunity to those students to take UT School of Public Health courses for credit. The non-degree student generally is allowed to take a maximum of sixteen credits in School of Public Health courses unless the student is associated with a formally recognized educational collaboration or a certificate program.

Certificate Program

The certificate program is intended for public health practitioners and individuals considering a graduate degree in the field. The five courses in these non-degree programs cover the core content of the disciplines that are basic to public health and are available at all campuses. Current certificate programs are:

- General Public Health Certificate
- Public Health Informatics Certificate
- Health Disparities Certificate
- Maternal and Child Health Certificate

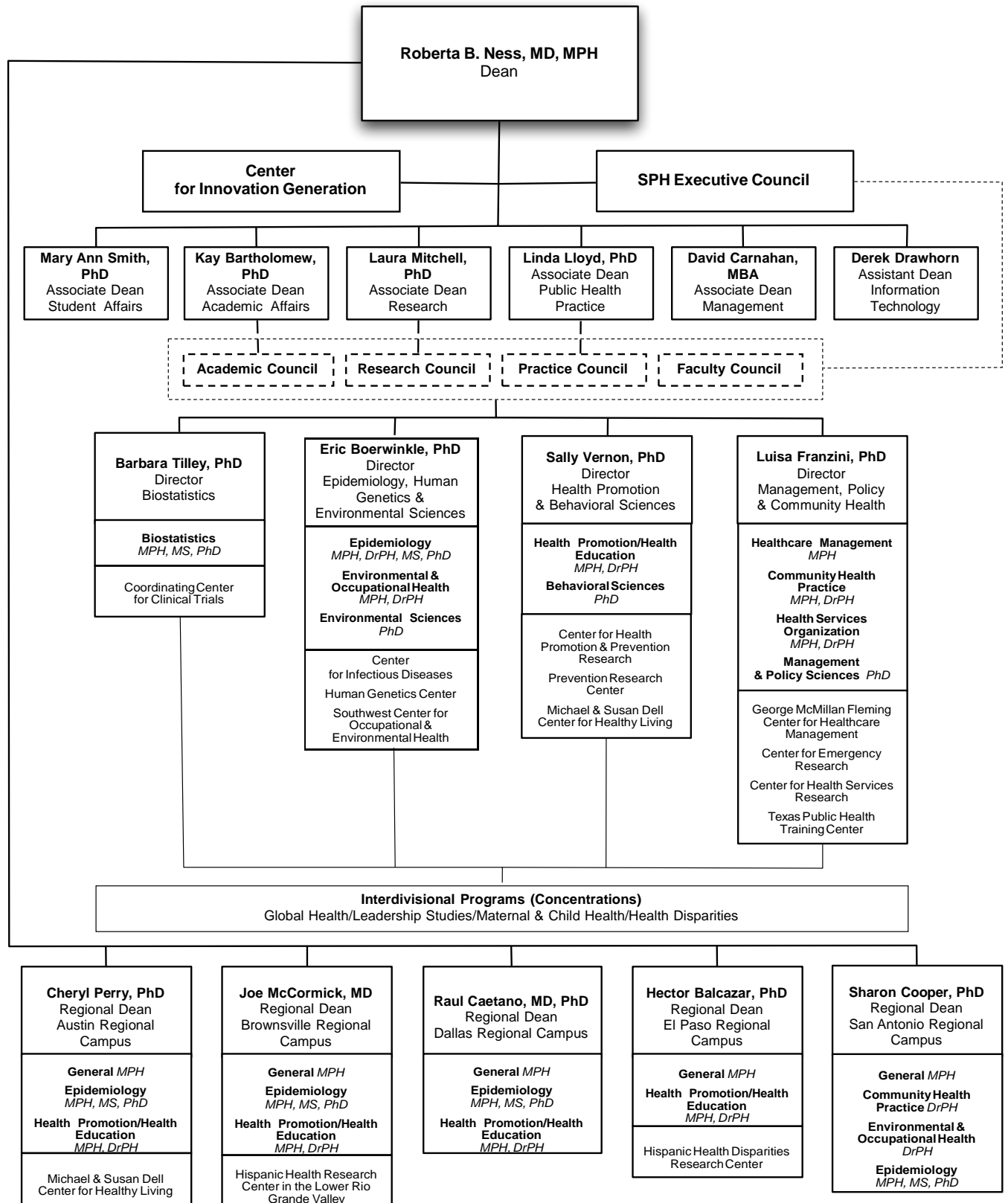
Professional Training Opportunities

The University of Texas School of Public Health provides graduate-level academic training and continuing education for professionals in government, business and the general community. Continuing education courses and professional training opportunities are available in the following areas:

- Continuing Education in Health Promotion
- Occupational & Environmental Health
- Continuing Education
- Center for Emergency Research

School of Public Health Organization

source: [Shon Bower](#), School of Public Health



Summary of Degree/Certificate Programs & Accreditation

School of Biomedical Informatics	Entity	Last	Next
MS in Health Informatics	SACS	2010	2020
PhD in Health Informatics	SACS	2010	2020

School of Dentistry

DDS	CODA	2005	2012
MS in Dental Graduate Specialty Programs	SACS	2010	2020
BS in Dental Hygiene	CODA	2005	2012
Certificate in Advanced Education Programs	CODA	2005	2012
Certificate in Dental Hygiene	CODA	2005	2012
Certificate in Oral & Maxillofacial Surgery	CODA	2010	2015

Graduate School of Biomedical Sciences

MS in Biomedical Sciences	SACS	2010	2020
MS	SACS	2010	2020
PhD in Biomedical Sciences	SACS	2010	2020
<i>Specialized Masters in Genetic Counseling</i>			
<i>Specialized Masters in Medical Physics</i>			

Medical School

MD	LCME	2004	2012
MS in Clinical Research	SACS	2010	2020

School of Nursing

BSN	CCNE	2011	2021
MSN	CCNE	2011	2021
Nurse Anesthesia	CANAEP	2011	2021
DSN	CCNE	2011	2021
PhD	SACS	2010	2020

School of Public Health

MPH in Public Health	CEPH	2005	2012
MS in Public Health	CEPH	2005	2012
DrPH in Public Health	CEPH	2005	2012
PhD in Public Health	CEPH	2005	2012
<i>MPH in Industrial Hygiene</i>			
<i>MS in Industrial Hygiene</i>			

SACS: Southern Association of Colleges & Schools
 CODA: Commission on Dental Accreditation
 LCME: Liaison Committee on Medical Education
 CCNE: Commission on Collegiate Nursing Education
 CANAEP: Council on Accreditation of Nurse Anesthesia Educational Programs
 CEPH: Commission on the Education of Public Health

Applicant Profile *Fall 2011*

source: [Robert Jenkins](#), Office of the Registrar; [Phil Pierpont, DDS](#), School of Dentistry; [Patricia Caver](#), Medical School

¹ in this and all other pertinent *Fact Book* tables, minorities include African American, Hispanic, Native American, and Pacific Islander.

		Grand Total	Male	Female	Minorities ¹
School of Dentistry					
<i>DDS</i>	Applications received	865	413	452	186
	Admitted	83	32	51	19
	Denied	617	300	317	133
	Withdrew after acceptance	74	31	43	21
	Withdrew before acceptance	28	12	16	2
<i>ACAD</i>	Applications Received	228	38	190	137
	Admitted	98	28	70	46
	Denied	115	10	105	82
	Pending/Incomplete/Waitlist	15	0	15	9
Graduate School of Biomedical Sciences					
	Applications Received	984	447	537	161
	Admitted	240	99	141	53
	Denied	299	132	167	64
	No action/pending	445	216	229	44
School of Biomedical Informatics					
	Applications Received	119	62	57	62
	Admitted	82	40	42	44
	Denied	6	3	3	2
	No action/pending/Incomplete	31	19	12	16
Medical School					
<i>MD</i>	Applications received	3,802	1,930	1,872	836
	Interviewed	930	487	443	212
	Admitted	240	128	112	55
<i>ACAD</i>	Applications Received	58	30	28	14
	Admitted	52	27	25	11
	Denied	4	1	3	2
	Pending/Incomplete/Waitlist	2	2	0	1
School of Nursing					
	Applications Received	3,369	514	2,855	1,681
	Admitted	830	139	691	327
	Denied	46	3	43	32
	Pending/Incomplete/Waitlist	2,493	372	2,121	1,322
School of Public Health					
	Applications Received	2,245	737	1,508	853
	Admitted	1,509	484	1,025	553
	Denied	383	148	235	147
	Pending/Incomplete/Waitlist	353	105	248	153
Grand Total UHealth					
	Applications Received	11,670	4,171	7,499	3,930
	Admitted	3,134	977	2,157	1,108

Headcount Enrollment by Full-time/Part-time Status *Fall 2007-2011*

source: [Robert Jenkins](#), Office of the Registrar

	2007		2008		2009		2010		2011	
	Number	Percent	Number	Percent	Number	Percent	Number	Percent	Number	Percent
School of Dentistry										
Full-time	420	93%	443	94%	455	96%	458	97%	464	96%
Part-time	32	7%	28	6%	19	4%	15	3%	20	4%
SOD Total	452		471		474		473		484	
Graduate School of Biomedical Sciences										
Full-time	517	89%	507	89%	522	88%	531	91%	528	92%
Part-time	61	11%	63	11%	71	12%	55	9%	47	8%
GSBS Total	578		570		593		586		575	
School of Biomedical Informatics										
Full-time	23	29%	26	26%	31	30%	32	27%	48	35%
Part-time	57	71%	73	74%	72	70%	88	73%	88	65%
SBMI Total	80		99		103		120		136	
Medical School										
Full-time	877	94%	908	94%	942	93%	955	93%	942	93%
Part-time	58	6%	55	6%	67	7%	70	7%	75	7%
MS Total	935		963		1,009		1,025		1,017	
School of Nursing										
Full-time	473	61%	459	60%	382	50%	540	61%	589	61%
Part-time	298	39%	300	40%	383	50%	346	39%	374	39%
SON Total	771		759		765		886		963	
School of Public Health										
Full-time	387	40%	409	41%	429	42%	672	48%	747	52%
Part-time	572	60%	594	59%	596	58%	723	52%	678	48%
SPH Total	959		1,003		1,025		1,395		1,425	
UTHealth Total										
Full-time	2,697	71%	2,752	71%	2,761	70%	3,188	71%	3,318	72%
Part-time	1,078	29%	1,113	29%	1,208	30%	1,297	29%	1,282	28%
Grand Total	3,775		3,865		3,969		4,485		4,600	

Headcount Enrollment by Level Fall 2002-2011

source: [Robert Jenkins](#), Office of the Registrar

	2002	2003	2004	2005	2006	2007	2008	2009	2010	2011
School of Dentistry										
Undergraduate	78	75	76	86	62	65	83	78	76	79
Graduate	27	31	21	22	28	29	30	25	29	29
Professional	253	258	256	258	281	300	324	329	333	336
Postgraduate	55	46	24	24	68	58	34	42	35	40
SOD Total	413	410	377	390	439	452	471	474	473	484
Graduate School of Biomedical Sciences										
Graduate	447	464	481	510	513	529	524	543	546	540
Non-degree	18	26	33	29	31	49	46	50	40	35
GSBS Total	465	490	514	539	544	578	570	593	586	575
School of Biomedical Informatics										
Graduate	47	59	47	44	48	43	97	97	115	126
Non-degree	15	15	17	11	25	37	2	6	5	10
SBMI Total	62	74	64	55	73	80	99	103	120	136
Medical School										
Graduate	15	21	17	21	41	58	55	67	71	75
Professional	810	816	830	848	871	877	908	942	954	942
MS Total	825	837	847	869	912	935	963	1,009	1,025	1,017
School of Nursing										
Undergraduate	281	272	305	317	316	364	385	378	498	515
Graduate	370	391	415	383	413	365	343	347	350	403
Non-degree	32	35	40	109	24	42	31	40	38	45
SON Total	683	698	760	809	753	771	759	765	886	963
School of Public Health										
Graduate	860	848	803	846	784	801	954	951	1,319	1,334
Non-degree	27	60	34	79	146	158	49	74	76	91
SPH Total	887	908	837	925	930	959	1,003	1,025	1,395	1,425
UTHealth Total										
Undergraduate	359	347	381	403	378	429	468	456	574	594
Graduate	1,766	1,814	1,784	1,826	1,827	1,825	2,003	2,030	2,430	2,507
Professional	1,063	1,074	1,086	1,106	1,152	1,177	1,232	1,271	1,287	1,278
Postgraduate	55	46	24	24	68	58	34	42	35	40
Non-degree	92	136	124	228	226	286	128	170	159	181
Grand Total	3,335	3,417	3,399	3,587	3,651	3,775	3,865	3,969	4,485	4,600

Headcount Enrollment by Ethnicity *Fall 2007 - 2011*

source: [Robert Jenkins](#), Office of the Registrar

	2007		2008		2009		2010		2011	
	#	%	#	%	#	%	#	%	#	%
School of Dentistry										
Asian	107	23.7%	110	23.4%	116	24.5%	116	24.5%	106	21.9%
Black	18	4.0%	15	3.2%	14	3.0%	10	2.1%	13	2.7%
Foreign	9	2.0%	11	2.3%	4	0.8%	7	1.5%	9	1.9%
Hispanic	64	14.2%	63	13.4%	76	16.0%	73	15.4%	74	15.3%
American Indian	4	0.9%	3	0.6%	1	0.2%	4	0.8%	1	0.2%
White	237	52.4%	252	53.5%	239	50.4%	241	51.0%	237	49.0%
Pacific Islander									2	0.4%
Unidentified	13	2.9%	17	3.6%	24	5.1%	20	4.2%	42	8.7%
Multi-Racial							2	0.4%		
SOD Total	452		471		474		473		484	
Graduate School of Biomedical Sciences										
Asian	56	9.7%	59	10.4%	62	10.5%	62	10.6%	54	9.4%
Black	21	3.6%	24	4.2%	21	3.5%	20	3.4%	15	2.6%
Foreign	203	35.1%	195	34.2%	208	35.1%	203	34.6%	205	35.7%
Hispanic	62	10.7%	69	12.1%	69	11.6%	62	10.6%	60	10.4%
American Indian	3	0.5%	1	0.2%	2	0.3%	1	0.2%	1	0.2%
White	228	39.4%	214	37.5%	228	38.4%	216	36.9%	209	36.3%
Unidentified	5	0.9%	8	1.4%	3	0.5%	22	3.8%	31	5.4%
GSBS Total	578		570		593		586		575	
School of Biomedical Informatics										
Asian	11	13.8%	17	17.2%	12	11.7%	21	17.5%	25	18.4%
Black	11	13.8%	12	12.1%	15	14.6%	22	18.3%	23	16.9%
Foreign	25	31.3%	27	27.3%	28	27.2%	26	21.7%	18	13.2%
Hispanic	2	2.5%	4	4.0%	5	4.9%	11	9.2%	3	2.2%
American Indian	2	2.5%		0.0%		0.0%		0.0%		0.0%
White	29	36.3%	39	39.4%	41	39.8%	36	30.0%	56	41.2%
Pacific Islander									1	0.7%
Unidentified					2	1.9%	4	3.3%	10	7.4%
SBMI Total	80		99		103		120		136	
Medical School										
Asian	111	11.9%	118	12.3%	125	12.4%	157	15.3%	143	14.1%
Black	36	3.9%	37	3.8%	49	4.9%	51	5.0%	55	5.4%
Foreign	38	4.1%	33	3.4%	37	3.7%	35	3.4%	39	3.8%
Hispanic	113	12.1%	122	12.7%	138	13.7%	126	12.3%	102	10.0%
American Indian	3	0.3%	3	0.3%	3	0.3%	2	0.2%	2	0.2%
White	609	65.1%	612	63.6%	618	61.2%	590	57.6%	574	56.4%

continued **Headcount Enrollment by Ethnicity**

	2007		2008		2009		2010		2011	
	#	%	#	%	#	%	#	%	#	%
Unidentified	25	2.7%	38	3.9%	39	3.9%	60	5.9%	102	10.0%
Multi-Racial							4	0.4%		
MS Total	935		963		1,009		1,025		1,017	
School of Nursing										
Asian	115	14.9%	109	14.4%	105	13.7%	124	14.0%	114	11.8%
Black	87	11.3%	96	12.6%	93	12.2%	104	11.7%	108	11.2%
Foreign	25	3.2%	26	3.4%	20	2.6%	13	1.5%	14	1.5%
Hispanic	92	11.9%	110	14.5%	103	13.5%	113	12.8%	96	10.0%
American Indian	5	0.6%	4	0.5%	3	0.4%	6	0.7%	3	0.3%
White	437	56.7%	407	53.6%	434	56.7%	501	56.5%	523	54.3%
Pacific Islander									2	0.2%
Unidentified	10	1.3%	7	0.9%	7	0.9%	25	2.8%	103	10.7%
SON Total	771		759		765		886		963	
School of Public Health										
Asian	134	14.0%	149	14.9%	154	15.0%	214	15.3%	215	15.1%
Black	94	9.8%	108	10.8%	103	10.0%	161	11.5%	140	9.8%
Foreign	205	21.4%	212	21.1%	219	21.4%	292	20.9%	324	22.7%
Hispanic	136	14.2%	137	13.7%	148	14.4%	154	11.0%	110	7.7%
American Indian	13	1.4%	8	0.8%	5	0.5%	4	0.3%	2	0.1%
White	370	38.6%	378	37.7%	385	37.6%	511	36.6%	512	35.9%
Unidentified	7	0.7%	11	1.1%	11	1.1%	58	4.2%	122	8.6%
Multi-Racial							1	0.1%		0.0%
SPH Total	959		1,003		1,025		1,395		1,425	
UTHealth Total										
Asian	534	14.1%	562	14.5%	574	14.5%	694	15.5%	657	14.3%
Black	267	7.1%	292	7.6%	295	7.4%	368	8.2%	354	7.7%
Foreign	505	13.4%	504	13.0%	516	13.0%	576	12.8%	609	13.2%
Hispanic	469	12.4%	505	13.1%	539	13.6%	539	12.0%	445	9.7%
American Indian	30	0.8%	19	0.5%	14	0.4%	17	0.4%	9	0.2%
White	1,910	50.6%	1,902	49.2%	1,945	49.0%	2,095	46.7%	2,111	45.9%
Pacific Islander									5	0.1%
Unidentified	60	1.6%	81	2.1%	86	2.2%	189	4.2%	410	8.9%
Multi-Racial							7	0.2%		
Grand Total	3,775		3,865		3,969		4,485		4,600	

Headcount Enrollment by Ethnicity (Domestic Students ONLY) Fall 2007 - 2011

source: [Robert Jenkins](#), Office of the Registrar

	2007		2008		2009		2010		2011	
	#	%	#	%	#	%	#	%	#	%
School of Dentistry										
Asian	107	24.2%	110	23.9%	116	24.7%	116	24.9%	106	22.3%
Black	18	4.1%	15	3.3%	14	3.0%	10	2.1%	13	2.7%
Hispanic	64	14.4%	63	13.7%	76	16.2%	73	15.7%	74	15.6%
American Indian	4	0.9%	3	0.7%	1	0.2%	4	0.9%	1	0.2%
White	237	53.5%	252	54.8%	239	50.9%	241	51.7%	237	49.9%
Pacific Islander		0.0%							2	0.4%
Unidentified	13	2.9%	17	3.7%	24	5.1%	20	4.3%	42	8.8%
Multi-Racial							2	0.4%		
SOD Total	443		460		470		466		475	
Graduate School of Biomedical Sciences										
Asian	56	14.9%	59	15.7%	62	16.1%	62	16.2%	54	14.6%
Black	21	5.6%	24	6.4%	21	5.5%	20	5.2%	15	4.1%
Hispanic	62	16.5%	69	18.4%	69	17.9%	62	16.2%	60	16.2%
American Indian	3	0.8%	1	0.3%	2	0.5%	1	0.3%	1	0.3%
White	228	60.8%	214	57.1%	228	59.2%	216	56.4%	209	56.5%
Unidentified	5	1.3%	8	2.1%	3	0.8%	22	5.7%	31	8.4%
GSBS Total	375		375		385		383		370	
School of Biomedical Informatics										
Asian	11	20.0%	17	23.6%	12	16.0%	21	22.3%	25	21.2%
Black	11	20.0%	12	16.7%	15	20.0%	22	23.4%	23	19.5%
Hispanic	2	3.6%	4	5.6%	5	6.7%	11	11.7%	3	2.5%
American Indian	2	3.6%								
White	29	52.7%	39	54.2%	41	54.7%	36	38.3%	56	47.5%
Pacific Islander									1	0.8%
Unidentified					2	2.7%	4	4.3%	10	8.5%
SBMI Total	55		72		75		94		118	
Medical School										
Asian	111	12.4%	118	12.7%	125	12.9%	157	15.9%	143	14.6%
Black	36	4.0%	37	4.0%	49	5.0%	51	5.2%	55	5.6%
Hispanic	113	12.6%	122	13.1%	138	14.2%	126	12.7%	102	10.4%
American Indian	3	0.3%	3	0.3%	3	0.3%	2	0.2%	2	0.2%
White	609	67.9%	612	65.8%	618	63.6%	590	59.6%	574	58.7%
Unidentified	25	2.8%	38	4.1%	39	4.0%	60	6.1%	102	10.4%
Multi-Racial							4	0.4%		
MS Total	897		930		972		990		978	

continued **Headcount Enrollment by Ethnicity (Domestic only)**

	2007		2008		2009		2010		2011	
	#	%	#	%	#	%	#	%	#	%
School of Nursing										
Asian	115	15.4%	109	14.9%	105	14.1%	124	14.2%	114	12.0%
Black	87	11.7%	96	13.1%	93	12.5%	104	11.9%	108	11.4%
Hispanic	92	12.3%	110	15.0%	103	13.8%	113	12.9%	96	10.1%
American Indian	5	0.7%	4	0.5%	3	0.4%	6	0.7%	3	0.3%
White	437	58.6%	407	55.5%	434	58.3%	501	57.4%	523	55.1%
Pacific Islander									2	0.2%
Unidentified	10	1.3%	7	1.0%	7	0.9%	25	2.9%	103	10.9%
SON Total	746		733		745		873		949	
School of Public Health										
Asian	134	17.8%	149	18.8%	154	19.1%	214	19.4%	215	19.5%
Black	94	12.5%	108	13.7%	103	12.8%	161	14.6%	140	12.7%
Hispanic	136	18.0%	137	17.3%	148	18.4%	154	14.0%	110	10.0%
American Indian	13	1.7%	8	1.0%	5	0.6%	4	0.4%	2	0.2%
White	370	49.1%	378	47.8%	385	47.8%	511	46.3%	512	46.5%
Unidentified	7	0.9%	11	1.4%	11	1.4%	58	5.3%	122	11.1%
Multi-Racial							1	0.1%		
SPH Total	754		791		806		1,103		1,101	
UTHealth Total										
Asian	534	16.3%	562	16.7%	574	16.6%	694	17.8%	657	16.5%
Black	267	8.2%	292	8.7%	295	8.5%	368	9.4%	354	8.9%
Hispanic	469	14.3%	505	15.0%	539	15.6%	539	13.8%	445	11.2%
American Indian	30	0.9%	19	0.6%	14	0.4%	17	0.4%	9	0.2%
White	1,910	58.4%	1,902	56.6%	1,945	56.3%	2,095	53.6%	2,111	52.9%
Pacific Islander									5	0.1%
Unidentified	60	1.8%	81	2.4%	86	2.5%	189	4.8%	410	10.3%
Multi-Racial							7	0.2%		
Grand Total	3,270		3,361		3,453		3,909		3,991	

Headcount Enrollment by Level, Ethnicity & Gender *Fall 2011*

source: [Robert Jenkins](#), Office of the Registrar

	Foreign		Black		Am Indian		Asian		Hispanic		White		Unknown		Pacific Islander		Total		Grd Total	
	M	F	M	F	M	F	M	F	M	F	M	F	M	F	M	F	M	F		
School of Dentistry																				
Undergraduate	0	0	0	4	0	0	1	17	3	13	0	33	2	6	0	0	6	73	79	
Graduate	1	3	0	0	1	0	5	3	2	4	4	3	1	2	0	0	14	15	29	
Postgraduate	0	3	0	1	0	0	2	5	4	2	11	9	1	1	0	1	18	22	40	
DDS Year 1	1	0	1	2	0	0	6	6	4	6	18	30	3	8	0	0	33	52	85	
DDS Year 2	0	1	1	2	0	0	6	12	5	4	20	22	2	7	0	1	34	49	83	
DDS Year 3	0	0	1	0	0	0	15	10	7	9	25	14	2	4	0	0	50	37	87	
DDS Year 4	0	0	1	0	0	0	7	11	2	9	26	22	1	2	0	0	37	44	81	
Total SOD	2	7	4	9	1	0	42	64	27	47	104	133	12	30	0	2	192	292	484	
% of SOD Total	4.0	1.4	0.8	1.9	0.2	0.0	8.7	13.2	5.6	9.7	21.5	27.5	2.5	6.2	0.0	0.4	39.7	60.3	100.0	
Graduate School of Biomedical Sciences																				
Graduate	94	107	4	10	0	1	22	28	18	29	92	107	7	21	0	0	237	303	540	
Non-degree	1	3	1	0	0	0	1	3	6	7	3	7	3	0	0	0	15	20	35	
Total GSBS	95	110	5	10	0	1	23	31	24	36	95	114	10	21	0	0	252	323	575	
% Of GSBS Total	16.5	19.1	0.9	1.7	0.0	0.2	4.0	5.4	4.2	6.3	16.5	19.8	1.7	3.7	0.0	0.0	43.8	56.2	100.0	
School of Biomedical Informatics																				
Graduate	11	7	10	12	0	0	10	15	3	0	25	22	6	4	1	0	66	60	126	
Non-degree	0	0	0	1	0	0	0	0	0	0	1	8	0	0	0	0	1	9	10	
Total SBMI	11	7	10	13	0	0	10	15	3	0	26	30	6	4	1	0	67	69	136	
% Of SBMI Total	8.1	5.1	7.4	9.6	0.0	0.0	7.4	11.0	2.2	0.0	19.1	22.1	4.4	2.9	0.7	0.0	49.3	50.7	100.0	
Medical School																				
Graduate	22	15	0	3	0	0	2	5	3	2	5	11	5	2	0	0	37	38	75	
MD Year 1	0	0	4	15	0	0	13	10	5	8	86	60	23	21	0	0	131	114	245	
MD Year 2	1	0	4	4	0	1	24	27	10	2	81	55	13	15	0	0	133	104	237	
MD Year 3	1	0	7	7	0	1	18	14	21	14	91	55	5	6	0	0	143	97	240	
MD Year 4	0	0	6	5	0	0	16	14	19	18	79	51	9	3	0	0	129	91	220	
Total MS	24	15	21	34	0	2	73	70	58	44	342	232	55	47	0	0	573	444	1017	
% of MS Total	2.4	1.5	2.1	3.3	0.0	0.2	7.2	6.9	5.7	4.3	33.6	22.8	5.4	4.6	0.0	0.0	56.3	43.7	100.0	
School of Nursing																				
Undergraduate	0	0	9	46	0	1	15	53	13	40	37	232	11	56	0	2	85	430	515	
Graduate	2	9	8	39	0	2	8	33	7	32	39	195	3	26	0	0	67	336	403	
Non-degree	0	3	0	6	0	0	0	5	0	4	1	19	0	7	0	0	1	44	45	
Total SON	2	12	17	91	0	3	23	91	20	76	77	446	14	89	0	2	153	810	963	
% of SON Total	0.2	1.2	1.8	9.4	0.0	0.3	2.4	9.4	2.1	7.9	8.0	46.3	1.5	9.2	0.0	0.2	15.9	84.1	100.0	
School of Public Health																				
Undergraduate	0	0	0	0	0	0	0	0	0	0	0	0	0	0	0	0	0	0	0	
Graduate	132	169	33	100	0	2	55	142	23	79	109	378	21	91	0	0	373	961	1334	
Non-degree	8	15	3	4	0	0	5	13	2	6	8	17	2	8	0	0	28	63	91	
Total SPH	140	184	36	104	0	2	60	155	25	85	117	395	23	99	0	0	401	1024	1425	
% of SPH Total	13.7	12.9	2.5	7.3	0.0	0.1	4.2	10.9	1.8	6.0	8.2	27.7	1.6	6.9	0.0	0.0	28.1	71.9	100.0	
Grand Total UTHHealth	274	335	93	261	1	8	231	426	157	288	761	1350	120	290	1	4	1638	2962	4,600	
% of UTH Total	6.0	7.3	2.0	5.7	0.0	0.2	5.0	9.3	3.4	6.3	16.5	29.3	2.6	6.3	0.0	0.1	35.6	64.4	100.0	

Headcount Enrollment by Academic Program *Fall 2011*

source: [Robert Jenkins](#), Office of the Registrar

	Non-Degree	Certificate	Bachelor	Master	Doctoral	Professional	Grand Total
School of Dentistry							
Post-graduate Certificate	0	40	0	0	0	0	40
Dental Hygiene	0	3	76	0	0	0	79
Master of Science	0	0	0	29	0	0	29
Doctor of Dental Surgery	0	0	0	0	0	336	336
SOD Total	0	43	76	29	0	336	484
Graduate School of Biomedical Sciences							
Biochemistry	0	0	0	0	11	0	11
Biomathematics/Statistics	0	0	0	0	9	0	9
Biomedical Sciences	0	0	0	40	142	0	182
Cancer Biology	0	0	0	5	95	0	100
Cell Biology	0	0	0	1	2	0	3
Cell/Regulatory Biology	0	0	0	0	10	0	10
Experimental Therapeutics	0	0	0	1	17	0	18
Genes and Development	0	0	0	0	30	0	30
Genetics Counseling	0	0	0	14	0	0	14
Human & Molecular Genetics	0	0	0	0	10	0	10
Immunology	0	0	0	0	25	0	25
Medical Physics	0	0	0	12	41	0	53
Microbiology & Molecular Genetics	0	0	0	0	21	0	21
Molecular Biology	0	0	0	0	1	0	1
Molecular Carcinogenesis	0	0	0	0	17	0	17
Molecular Pathology	0	0	0	0	4	0	4
Neurosciences	0	0	0	0	27	0	27
Virology & Gene Therapy	0	0	0	0	5	0	5
Non Degree	35	0	0	0	0	0	35
GSBS Total	35	0	0	73	467	0	575
Medical School							
Doctor of Medicine	0	0	0	0	0	942	942
Clinical Research	3	60	0	12	0	0	75
MS Total	3	60	0	12	0	942	1,017
School of Nursing							
BSN - Generic	0	0	458	0	0	0	458
BSN/RN - Flex	0	0	56	0	0	0	56
BSN/RN - Accelerated	0	0	0	0	0	0	0
Master of Science in Nursing	0	0	0	0	0	0	0
Acute Care/Clinical Nursing	0	0	0	0	0	0	0
Acute Care/Nursing Practice	0	0	0	30	0	0	30

continued **Headcount Enrollment by Academic Program**

	Non-Degree	Certificate	Bachelor	Master	Doctoral	Professional	Grand Total
Administration	0	0	0	33	0	0	33
Adult/Nurse Practitioner	0	0	0	28	0	0	28
Adult/ Education Nursing Specialist	0	0	0	0	0	0	0
Critical Care/Clinical Nursing	0	0	0	0	0	0	0
Family Practice Nurse Practitioner	0	0	0	127	0	0	127
Gerontology/Nursing Practice Nursing	0	0	0	4	0	0	4
Gerontology/Education Nursing	0	0	0	0	0	0	0
Nurse Anesthetist/Clinical Nursing	0	0	0	57	0	0	57
Nurse Education	0	0	0	4	0	0	4
Pediatric/Nurse Practitioner	0	0	0	8	0	0	8
Psychiatric/Mental Health Nurse Pract.	0	0	0	6	0	0	6
Women's Health Nursing	0	0	0	14	0	0	14
Non Degree	46	0	0	0	0	0	46
Doctor of Nursing Practice	0	0	0	0	46	0	46
PhD in Nursing	0	0	0	0	46	0	46
SON Total	46	0	514	311	92	0	963
School of Biomedical Informatics							
Health Informatics	0	0	0	58	26	0	58
Certificate	0	41	0	0	0	0	41
Non-degree	11	0	0	0	0	0	11
SBMI Total	11	41	0	58	26	0	136
School of Public Health							
Certificate in Health Disparities	0	5	0	0	0	0	5
Certificate in Public Health	0	102	0	0	0	0	102
DrPH in Health Services Organization/Health Services Administration	0	0	0	0	19	0	19
DrPH in Community Health Practice	0	0	0	0	25	0	25
DrPH in Community Health Practice Sant	0	0	0	0	17	0	17
DrPH in Epidemiology	0	0	0	0	3	0	3
DrPH in Health Promotion/Hlth Edu Austin	0	0	0	0	12	0	12
DrPH in Health Prom/Hlth Educ Brwn	0	0	0	0	4	0	4
DrPH in Health Prom/Hlth Educ El Paso	0	0	0	0	31	0	31
DrPH in Health Promotion/Health Edu	0	0	0	0	0	0	0
DrPH in Occ & Envn Health/Aerospa	0	0	0	0	2	0	2
MPH Dallas Program	0	0	0	59	0	0	59
MPH Austin Program	0	0	0	85	0	0	85
MPH in Biostatistics	0	0	0	15	0	0	15
MPH in Brownsville Program	0	0	0	4	0	0	4
MPH in Community Health	0	0	0	56	0	0	56
MPH in Disease Control	0	0	0	1	0	0	1
MPH in El Paso Program	0	0	0	13	0	0	13

continued **Headcount Enrollment by Academic Program**

Academic Program	Non-Degree	Certificate	Bachelor	Master	Doctoral	Professional	Grand Total
MPH in Epidemiology	0	0	0	152	0	0	152
MPH in Epidemiology - Austin	0	0	0	6	0	0	6
MPH in Epidemiology - Dallas	0	0	0	3	0	0	3
MPH in Epidemiology - San Antonio	0	0	0	2	0	0	2
MPH in Health Services Organizations	0	0	0	39	19	0	58
MPH in Healthcare Management	0	0	0	72	0	0	72
MPH in Health Promotion/Health Edu	0	0	0	121	0	0	121
MPH in Health Promotion/Health Edu - Austin	0	0	0	10	0	0	10
MPH in Health Promotion/Health Edu - Dallas	0	0	0	2	0	0	2
MPH in Health Promotion/Health Edu - El Paso	0	0	0	1	0	0	1
MPH in International & Family Health	0	0	0	1	0	0	1
MPH in Occ & Eng Health/Aerospac	0	0	0	46	0	0	46
MPH in San Antonio Program	0	0	0	72	0	0	72
MS in Biomathematics/Statistics	0	0	0	44	0	0	44
MS in Environmental Science	0	0	0	1	0	0	1
MS in Epidemiology	0	0	0	20	0	0	20
MS in Epidemiology - Dallas	0	0	0	1	0	0	1
Non degree Baylor Pub Health	21	0	0	0	0	0	21
Non degree Dallas Program	1	0	0	0	0	0	1
Non degree El Paso Program	1	0	0	0	0	0	1
Non degree Pub Health-Brownsville	2	0	0	0	0	0	2
Non degree Public Health-No Mod/Dis	30	0	0	0	0	0	30
Non degree San Antonio Program	9	0	0	0	0	0	9
Non degree PH Audit - Houston	1	0	0	0	0	0	1
Non degree Public Health - Austin Campus	2	0	0	0	0	0	2
Non Degree Concurrent Enrollment	18	0	0	0	0	0	18
Non Degree SPH Faculty/Fellow	6	0	0	0	0	0	6
PhD in Behavioral Sciences	0	0	0	0	23	0	23
PhD in Biological Science	0	0	0	0	0	0	0
PhD in Biometry	0	0	0	0	66	0	66
PhD in Environmental Sciences	0	0	0	0	11	0	11
PhD in Epidemiology	0	0	0	0	70	0	70
PhD in Epidemiology Austin	0	0	0	0	12	0	12
PhD in Epidemiology Brownsville	0	0	0	0	4	0	4
PhD in Epidemiology Dallas	0	0	0	0	6	0	6
PhD in Management & Policy Sciences	0	0	0	0	77	0	77
SPH Total	91	107	0	826	401	0	1,425
UTHealth Total	186	251	590	1,309	986	1278	4,600

Headcount Enrollment by Residency *Fall 2002 - 2011*

source: [Robert Jenkins](#), Office of the Registrar

	2002	2003	2004	2005	2006	2007	2008	2009	2010	2011
School of Dentistry										
Texas Residents	368	370	357	369	401	427	445	448	449	458
Out of State	29	21	14	17	26	19	21	21	18	18
Foreign	16	19	6	4	12	6	5	5	6	8
SOD Total	413	410	377	390	439	452	471	474	473	484
Graduate School of Biomedical Sciences										
Texas Residents	181	190	198	189	209	233	245	239	230	224
Out of State	144	149	144	164	144	145	132	149	142	143
Foreign	140	151	172	186	191	200	193	205	214	208
GSBS Total	465	490	514	539	544	578	570	593	586	575
School of Biomedical Informatics										
Texas Residents	44	49	40	37	54	57	5	68	90	109
Out of State		1	3			4	9	8	6	9
Foreign	18	24	21	18	9	19	25	27	24	18
SBMI Total	62	74	64	55	73	80	99	103	120	136
Medical School										
Texas Residents	804	813	818	847	861	873	897	932	952	918
Out of State	17	21	24	19	27	25	36	43	39	60
Foreign	4	3	5	3	24	37	30	34	34	39
MS Total	825	87	847	869	912	935	963	1,009	1,025	1,017
School of Nursing										
Texas Residents	580	587	647	690	638	684	703	730	859	928
Out of State	98	105	99	105	96	69	36	17	19	24
Foreign	5	6	14	14	19	18	20	18	8	11
SON Total	683	698	760	809	753	771	759	765	886	963
School of Public Health										
Texas Residents	725	747	669	682	713	717	746	753	989	950
Out of State	63	59	51	97	57	72	64	57	124	161
Foreign	99	102	117	146	160	170	193	215	282	314
SPH Total	887	908	837	925	930	959	1,003	1,025	1,395	1,425
UT Health Total										
Texas Residents	2,702	2,756	2,729	2,814	2,876	2,991	3,101	3,170	3,569	3,587
Out of State	351	356	335	402	350	334	298	295	348	415
Foreign	282	3025	335	371	425	450	466	504	568	598
Grand Total	3,335	3,417	3,399	3,587	3,651	3,775	3,865	3,969	4,485	4,600

Full-time Equivalent (FTE) Student Enrollment *Fall 2002 - 2011*

source: [Robert Jenkins](#), Office of the Registrar

	2002	2003	2004	2005	2006	2007	2008	2009	2010	2011
School of Dentistry	376.17	378.72	370.84	380.69	411.92	431.85	453.17	460.27	461.82	468.10
Graduate School of Biomedical Sciences	440.47	464.55	482.22	513.45	512.07	536.86	526.78	547.53	551.22	548.20
School of Biomedical Informatics	42.68	53.91	43.1	39.7	50.09	47.96	58.38	62.03	71.72	89.84
Medical School	818.29	827.17	837.27	856.94	874.75	896.6	928.18	966.12	978.88	966.10
School of Nursing	592.06	605.74	661.26	660.61	642.53	648.85	647.65	611.71	760.69	829.40
School of Public Health	554.07	561.6	543.26	609.91	629.66	624.32	690.61	714.83	1,006.81	1,092.00
Grand Total UTHealth	2,823.74	2,891.69	2,937.95	3,061.37	3,121.02	3,186.44	3,304.77	3,362.49	3,831.14	3,993.64

GSBS Students by Institutional Affiliation *Fall 2002 - 2011*

source: [Patricia Bruesch](#), Graduate School of Biomedical Sciences

	2002	2003	2004	2005	2006	2007	2008	2009	2010	2011
UTHealth										
Medical School	120	135	126	144	136	133	127	139	130	120
School of Dentistry	3	5	5	4	2	2	1	1	0	0
School of Public Health	13	15	6	7	6	2	3	6	7	8
Subtotal UTHealth	136	155	137	155	149	143	141	146	137	128
UT MD Anderson Cancer Center	228	283	262	254	276	306	306	370	330	361
TAMU Institute of Biosciences and Technology	12	12	6	5	5	4	5	5	3	6
Other	89	28	88	127	99	93	96	51	107	77
Grand Total GSBS	465	478	493	541	529	546	548	572	577	572

Licensure Examination Results 2011

source: [Patricia Caver](#), Medical School; [Phil Pierpont, DDS](#), School of Dentistry; [Laurie Rutherford](#), School of Nursing

FY 2011 National Licensure Exam (School of Dentistry)

	Total Examined	Total Passed	Percent Passed
Combined NBDE Parts 1 & 2	163	159	97.0%

Dental Hygiene National Board Exam (School of Dentistry)

	Total Examined	Total Passed	Percent Passed
Dental Hygiene	32	32	100.0%

Texas State Board of Nursing Examiners Results (School of Nursing)

	Total Examined	Total Passed	Percent Passed
NCLEX - RN	235	232	99.0%

USMLE Step 1 Exam (Medical School) *performance as of 9/17/11*

	Total Examined	Total Passed	Percent Passed
USMLE	234	225	96.0%

Degrees Conferred by School FY 2007 - 2011

source: [Robert Jenkins](#), Office of the Registrar

	FY 2007	FY 2008	FY 2009	FY 2010	FY 2011
School of Dentistry					
Bachelor's	36	35	37	40	33
Certificate	36	39	34	36	32
Master's	16	19	24	18	22
Professional	60	59	75	79	81
Total SOD	148	152	170	173	168
Graduate School of Biomedical Sciences					
Master's	37	32	32	42	34
Doctoral	57	62	69	77	63
Total GSBS					97
Medical School					
Master's	3	2	4	3	0
Professional	215	187	189	221	241
Total MS	218	189	193	224	241
School of Nursing					
Bachelor's	166	201	201	218	306
Master's	137	104	108	75	79
Doctoral	4	7	15	10	21
Total SON	307	312	324	303	406
School of Biomedical Informatics					
Master's	10	10	10	10	13
Doctoral	1	2	5	2	5
Total SBMI	11	12	15	12	18
School of Public Health					
Master's	134	141	165	171	306
Doctoral	46	47	45	36	37
Total SPH	180	188	210	207	343
UTHealth					
Bachelor's	202	236	238	258	339
Certificate	36	39	34	36	32
Master's	337	308	343	319	454
Doctoral	108	118	134	125	126
Professional	275	246	264	300	322
Grand Total UTHealth	958	947	1,013	1,038	1,273

Degrees Conferred by Academic Program FY 2011

source: [Robert Jenkins](#), Office of the Registrar

	Grand Total	Ungrd Certif	Postgrd Certif	BS	MPH	MS	MSN	MD	DDS	DNP	DrPH	PhD
School of Dentistry												
Dental Education - DDS	81								81			
Dental Hygiene	35	2		33								
Endodontics	4		2			2						
Oral Surgery	5		5									
Orthodontics	14		7			7						
Pediatric Dentistry	9		6			3						
Periodontics	8		4			4						
Prosthodontics	12		6			6						
Total SOD	168	2	30	33	0	22	0	0	81	0	0	0
Graduate School of Biomedical Sciences												
Biochemistry	4											4
Biomathematics/Statistics	3											3
Biomedical Sciences	19											19
Cancer Biology	11											11
Genes And Development	7											7
Human & Molecular Genetics	2											2
Immunology	5											5
Medical Physics	1											1
Micro & Molecular Genet	4											4
Molecular Carcinogenesis	3											3
Molecular Pathology	1											1
Neurosciences	3											3
Biochemistry	1					1						
Biomedical Sciences	15					15						
Experimental Therapeutics	1					1						
Genetics Counseling	6					6						
Math/Statistics	1					1						
Medical Physics	9					9						
Microbiology & Molecular Genetics	1					1						
Total GSBS	97	0	0	0	0	34	0	0	0	0	0	63
Medical School												
Medicine - MD	241							241				
Total MS	241	0	0	0	0	0	0	241	0	0	0	0
School of Nursing												
Acute Care/Nurse Practitioner	5							5				
Administration	3							3				
Adult/Nurse Practitioner	9							9				
Family Practice Nurse Practitioner	21							21				

continued **Degrees Conferred by Academic Program**

	Grand Total	Ungrd Certif	Postgrd Certif	BS	MPH	MS	MSN	MD	DDS	DNP	DrPH	PhD
Gerontology/Nurse Practitioner	5						5					
Nurse Anesthetist/Clinical Nursing	20						20					
Pediatric/Nurse Practice	6						6					
Psych Mental Health Nurse Practitioner	1						1					
Women's Health Nursing	9						9					
BSN Accelerated	43			43								
BSN Generic	196			196								
Nursing - Doctor of Nursing Practice	21									11		10
RN/BSN	67			67								
Total SON	406	0	0	306	0		79	0	0	11	0	10
School of Biomedical Informatics												
Health Informatics	18						18					
Total SBMI	18	0	0	0	0	18	0	0	0	0	0	0
School of Public Health												
Austin	21					21						
Behavioral Science	6											6
Biometry	6											6
Biostatistics	8					1	7					
Brownsville	10						10					
Community Health	19						18				1	
Dallas	27						27					
Disease Control	4						4					
El Paso	8						8					
Environmental Science	3											3
Epidemiology	73						56	6				11
Health Promotion/Education	46						45				1	
Health Service Organization	26						23				3	
International/Family Health	1						1					
Management and Policy Sciences	13						8					5
Occupational/Environmental	25						24				1	
San Antonio	47						47					
Total SPH	343	0	0	0	293	13	0	0	0	0	6	31
Grand Total UTHealth	1,273	2	30	339	293	87	79	241	81	11	6	104

Degrees Conferred by Level & Ethnicity FY 2011

source: [Robert Jenkins](#), Office of the Registrar

	Asian	Black	Foreign	Hispanic	Am Indian	White	Uniden- tified	Pacific Islander	Multi- Racial	Grand Total
School of Dentistry										
Bachelor's	7	1		6		17	2			33
Certificate	8		4	5	1	12	2			32
Master's	5		2	4		9	2			22
Professional	23			13	1	43	1			81
Total SOD	45	3	8	28	2	82	7	1		176
Graduate School of Biomedical Sciences										
Doctoral	8	1	22	7		23	2			63
Master's	4	1	3	4	1	20			1	34
GSBS Total	12	2	25	11	1	43	2		1	97
Medical School										
Professional	35	16	4	30		152	4			241
MS Total	35	16	4	30		152	4			241
School of Nursing										
Bachelor's	49	31	2	47	4	167	4		2	306
Doctoral		3	2	1		15				21
Master's	13	7	2	7		49	1			79
SON Total	62	41	6	55	4	231	5		2	406
School of Biomedical Informatics										
Doctoral			2	1		2				5
Master's	1	3	6			3				13
SBMI Total	1	3	8	1		5				18
School of Public Health										
Doctoral	7	2	10	4		11	3			37
Master's	45	32	52	47	1	115	12		2	306
SPH Total	52	34	62	51	1	126	15		2	343
UTHealth										
Bachelor's	56	32	2	53	4	184	6	0	2	339
Certificate	8	0	4	5	1	12	2	0	0	32
Doctoral	15	6	36	13	0	51	5	0	0	126
Master's	68	43	65	62	2	196	15	0	3	454
Professional	58	16	4	43	1	195	5	0	0	322
Grand Total	205	97	111	176	8	638	33	0	5	1,273

Profile of Medical Residents in ACGME Accredited Programs as of September 2011

source: [April Bass](#), Medical School

Specialty	M	F	White	Black	Pacific Islander	Asian	Amer. Indian	Multi-Racial	Other	Total
Adolescent Medicine	0	2	2	0	0	0	0	0	0	2
Adult Cardiothoracic Anesthesiology	1	1	2	0	0	0	0	0	0	2
Anesthesiology	49	32	38	5	0	34	1	0	3	81
Cardiovascular Disease	13	10	10	4	0	8	1	0	0	23
Child & Adolescent Psychiatry	1	7	5	1	0	2	0	0	0	8
Child Neurology	5	3	2	1	0	5	0	0	0	8
Clinical Cardiac Electrophysiology	1	0	0	0	0	1	0	0	0	1
Clinical Neurophysiology	1	3	0	0	0	4	0	0	0	4
Colon and Rectal Surgery	2	2	4	0	0	0	0	0	0	4
Combined Adult & Pediatric Nephrology	2	0	1	0	0	1	0	0	0	2
Critical Care Anesthesia	0	0	0	0	0	0	0	0	0	0
Dermatology	3	16	13	1	0	4	0	1	0	19
Dermatopathology	0	1	1	0	0	0	0	0	0	1
Diagnostic Radiology	35	17	28	2	0	20	0	2	0	52
Emergency Medicine	21	21	24	4	0	11	1	2	0	42
Endocrinology, Diabetes & Metabolism	1	3	1	0	0	2	0	1	0	4
Family Practice	21	14	12	3	0	17	3	0	0	35
Gastroenterology	8	2	7	1	0	2	0	0	0	10
General Surgery	37	11	33	0	0	13	1	1	0	48
Geriatric Medicine (IMG)	2	2	0	0	0	4	0	0	0	4
Infectious Diseases	3	7	5	1	0	4	0	0	0	10
Internal Medicine	67	55	59	10	0	46	5	1	1	122
Internal Medicine/Pediatrics	8	12	14	4	0	2	0	0	0	20
Interventional Cardiology	3	0	1	0	0	1	0	0	1	3
Medical Genetics	0	0	0	0	0	0	0	0	0	0
Neonatal Perinatal Medicine	3	8	5	2	0	3	0	0	1	11
Nephrology	4	5	1	1	0	7	0	0	0	9
Neurological Surgery	9	0	5	2	0	2	0	0	0	9
Neurology	12	5	5	0	0	11	1	0	0	17
Neuroradiology	2	0	1	0	0	1	0	0	0	2
Obstetrics & Gynecology - LBJ Hospital	1	24	7	8	0	7	1	1	1	25
Obstetrics & Gynecology - MHH	3	21	19	3	0	1	1	0	0	24
Occupational Medicine	2	2	1	1	0	1	1	0	0	4
Ophthalmology	7	5	9	0	0	3	0	0	0	12
Orthopaedic Surgery	14	1	13	0	0	1	0	0	1	15
Otolaryngology	9	2	6	1	0	3	0	1	0	11
Pathology	9	17	19	0	0	6	1	0	0	26
Pediatric Anesthesiology	0	1	1	0	0	0	0	0	0	1
Pediatric Cardiology	4	1	1	1	0	3	0	0	0	5
Pediatric Critical Care Medicine	2	1	1	1	0	1	0	0	0	3
Pediatric Endocrinology	0	3	1	0	0	2	0	0	0	3
Pediatric Gastroenterology	2	4	2	0	0	4	0	0	0	6
Pediatric Infectious Diseases	0	3	3	0	0	0	0	0	0	3
Pediatric Nephrology	0	2	0	0	0	1	0	1	0	2
Pediatric Pulmonology	1	0	0	0	0	1	0	0	0	1
Pediatric Surgery	1	1	2	0	0	0	0	0	0	2
Pediatrics	8	67	37	8	0	28	0	2	0	75
Pediatrics/Medical Genetics	1	3	2	1	0	0	0	1	0	4
Physical Medicine & Rehabilitation	7	4	6	0	0	5	0	0	0	11
Physical Medicine & Rehabilitation - CIP	1	0	0	0	0	1	0	0	0	1
Plastic & Reconstructive Surgery	3	1	2	0	0	1	0	1	0	4
Psychiatry	11	20	14	1	0	15	0	0	1	31
Pulmonary Disease & Critical Care Medicine	10	2	5	0	0	7	0	0	0	12
Rheumatology	0	7	4	0	0	2	1	0	0	7
Sleep Medicine	1	1	0	0	0	2	0	0	0	2
Spinal Cord Injury Medicine	0	0	0	0	0	0	0	0	0	0
Surgical Critical Care	0	3	3	0	0	0	0	0	0	3
Transitional	3	4	5	0	0	2	0	0	0	7
Urology	7	5	7	2	0	3	0	0	0	12
Vascular Neurology	4	0	2	0	0	1	0	1	0	4
Vascular Surgery	1	1	1	0	0	1	0	0	0	2
Grand Total	426	445	452	69	0	307	18	16	9	871

Medical School 2011 Graduating Class Specialty Choices

source: [Patricia Caver](#), Medical School

Specialty	Number	Percentage
Internal Medicine	47	19.5%
Anesthesiology	22	9.0%
Pediatrics	21	8.7%
Emergency Medicine	16	6.6%
Psychiatry	14	5.8%
Family & Community Medicine	13	5.4%
Obstetrics/Gynecology	12	5.0%
Diagnostic Radiology	12	5.0%
Surgery	11	4.6%
Deferred	11	4.6%
Otolaryngology	8	3.3%
Orthopaedic Surgery	7	2.9%
Neurology	6	2.5%
Internal Medicine-Pediatrics	6	2.5%
Dermatology	5	2.1%
Surgery-Preliminary	4	1.7%
Oral/Maxillofacial Surgery	4	1.7%
Pathology	4	1.7%
Urology	4	1.7%
Physical Med & Rehabilitation	3	1.2%
Neurological Surgery	3	1.2%
Child Neurology	2	0.8%
Ophthalmology	2	0.8%
Internal Medicine-Preliminary	1	0.4%
Plastic Surgery	1	0.4%
Vascular Surgery	1	0.4%
Nuclear Medicine	1	0.4%
Grand Total	241	

Note: Primary care fields are shaded.

School of Dentistry Residents & Postgraduate Students *Fall 2011*

source: [Phil Pierpont, DDS](#), School of Dentistry

Specialty	Total	Gender		White	Black	Hispanic	Asian	Amer Indian	Other
		M	F						
Endodontics	6	3	3	3		2	1		
General Dentistry (GPR)	5	1	4	1	1		2		1
General Dentistry (AEGD)	9	6	3	2		4	2		1
Oral & Maxillofacial Surgery	29	26	3	21	1	3	3		1
Orthodontics & Dentofacial Orthopedics	14	8	6	12		1	1		
Pediatric Dentistry	12	3	9	7		1	4		
Periodontics	9	5	4	3			5	1	
Prosthodontics	14	5	9	5		4	5		
Total	98	57	41	54	2	15	23	1	3

The UTHealth Advanced Education Programs of the School of Dentistry is composed of three types of students: postgraduate, graduate, and resident.

- A postgraduate student is a dentist registering and paying tuition and fees for courses leading to a certificate in the specialty area.
- A graduate student is a dentist registering and paying tuition and fees for courses leading to a Master of Science degree and a certificate in a dental specialty area.
- A resident is a dentist who receives training in a specialty area, is paid a stipend, and who receives a certificate of completion.
- Residencies are available only in oral and maxillofacial surgery.

School of Dentistry & Medical School Applicant Scores *Fall 2011 Entering Class*

source: [Phil Pierpont, DDS](#), School of Dentistry; [Patricia Caver](#), Medical School

Applicant Average Dental Aptitude Test (DAT) Scores Fall 2011 Entering Class

Subject	All Applicants	Enrolled Applicants
<i>Academic Average AA</i>	18.33	19.40
<i>Perception Ability MA</i>	18.72	19.65
<i>Quantitative Reasoning</i>	16.80	17.41
<i>Reading Comprehension</i>	19.62	21.04
<i>Biology</i>	18.91	19.29
<i>Inorganic Chemistry</i>	18.55	19.58
<i>Organic Chemistry</i>	18.46	19.64
Total Science	18.28	19.81
Applicant Average Overall GPA	3.35	3.65

Applicant Average Medical Comprehensive Aptitude Test (MCAT) Scores Fall 2011 Entering Class

Subject	All Applicants	Enrolled Applicants
<i>Biological Sciences</i>	9.52	10.77
<i>Physical Science</i>	9.0	10.2
<i>Verbal Reasoning</i>	8.68	9.85
Applicant Average	27.9	31.1
Applicant Average Overall GPA	3.53	3.73

Tuition & Fees Fall 2011 & Spring 2012

source:

Level	Resident	Non-Resident
Undergraduate - Nursing		
Tuition (30 semester credit hours)	\$5,100	\$20,970
<i>Fees</i>		
Student Service Fees	474	474
Information Technology Access Fee	66	66
Liability Insurance	24	24
Nursing Achievement Exam	240	240
Nursing Technology Resource Fee	130	130
Total Undergraduate (BSN)	\$6,034	\$21,904
Undergraduate - Dental Hygiene		
Tuition (30 semester credit hours)	\$4,080	\$13,470
<i>Fees</i>		
Student Service Fees	474	474
Technology Resource Fee	990	990
Information Technology Access Fee	66	66
Instrument Sterilization Fee	900	900
Laboratory Fee	20	20
Liability Insurance	15	15
Library Resource Fee	75	75
Total Undergraduate (BDH)	\$6,620	\$16,010
Medical (MD)		
Tuition	\$12,775	\$25,875
<i>Fees¹</i>		
Student Service Fees	474	474
Malpractice Insurance	25	25
Information Technology Fee	99	99
Computer Resource Fee	170	170
Technology Fee	200	200
Library Fee	100	100
Standardized Patient Fee	500	500
Total MD	\$12,224	\$25,324
Dental (DDS)		
Tuition	\$16,125	\$26,925
<i>Fees¹</i>		
Student Service Fees	474	474
Instrument Kit Rental Fee (average)	2,038	2,038
Liability Insurance	25	25
ASDA Student Activity Fee	120	120
Information Technology Access Fee	99	99
Library Fee	75	75
Technology Resource Fee	990	990
Total DDS	\$19,946	\$30,746

¹ Add'l fees are assessed per program year (gross anatomy, lab, pager)

² Add'l alternative instruction delivery fees are assessed for web courses

³ Fee assessed only to Genetic Counseling students

⁴ Fee assessed only to Prostho, Perio, OMFS, and Endo students

⁵ Additional Liability Insurance fee assessed to NP students

Note: All students pay a mandatory graduation fee (\$75) when applicable

Level	Resident	Non-Resident
Graduate - Biomedical Informatics		
Tuition (24 semester credit hours)	\$4,944	\$15,816
<i>Fees²</i>		
Student Service Fees	474	474
Information Technology Access Fee	66	66
Computer Resource Fee	200	200
Liability Insurance	24	24
Total Graduate - SBMI	\$5,708	\$16,580
Graduate - Biomedical Sciences		
Tuition (24 semester credit hours)	\$3,312	\$10,824
<i>Fees</i>		
Student Service Fees	474	474
Information Technology Access Fee	66	66
Liability Insurance ³	24	24
Total Graduate - GSBS	\$3,876	\$11,388
Graduate - Clinical Research		
Tuition (24 semester credit hours)	\$2,304	\$9,816
<i>Fees</i>		
Student Service Fees	474	474
Information Technology Access Fee	66	66
Total Graduate - MS in Clin Rsrch	\$2,844	\$10,356
Graduate - Dental Advanced Ed		
Tuition (24 semester credit hours)	\$3,456	\$10,968
<i>Fees</i>		
Student Service Fees	474	474
Information Technology Access Fee	66	66
Instrument Sterilization Fee ⁴	2500	2500
Liability Insurance (average)	805	805
Library Resource Fee	75	75
Technology Resource Fee	1290	1290
Total Graduate - Dental Adv Ed	\$8,666	\$16,178
Graduate - Nursing		
Tuition (24 semester credit hours)	\$4,944	\$17,568
<i>Fees²</i>		
Student Service Fees	474	474
Information Technology Access Fee	66	66
Liability Insurance ⁵	24	24
Nursing Technology Resource Fee	130	130
Total Graduate - SON	\$5,638	\$18,262
Graduate - Public Health		
Tuition (24 semester credit hours)	\$4,344	\$16,056
<i>Fees²</i>		
Student Service Fees	474	474
SPH Library Resource Fee	120	120
Liability Insurance	24	24
Computer Resource Fee	124	124
Information Technology Access Fee	66	66
Total Graduate - SPH	\$5,152	\$16,864

Student Financial Aid Profile *FY 2005 - 2011*

source: [Wanda Williams](#), Office of Student Financial Services

	FY 2005	FY 2006	FY 2007	FY 2008	FY 2009	FY 2010	FY 2011
Federal Grant Awards							
HPSLP – Dental	\$0	\$0	\$0	\$0	\$0	\$95,980	\$18,849
HPSLP – Medical	0	0	0	0	0	0	0
Nursing SLP – undergrad	0	0	0	0	0	0	0
Nursing SLP – graduate	18,931	0	0	0	0	0	0
NFLP	0	0	0	0	0	0	92,265
LDS – Dental	0	0	0	0	0	8,100	7,980
LDS – Medical	0	0	172,638	177,302	340,207	0	0
Federal Grant Total	\$18,931	\$0	\$172,638	\$177,302	\$340,207	\$104,080	\$119,094
Institutional Matching							
HPSLP – Dental	\$0	\$0	\$0	\$0	\$0	\$10,664	\$2,094
HPSLP – Medical	0	0	0	0	0	0	0
Nursing SLP – undergraduate	0	0	0	0	0	0	0
Nursing SLP – graduate	2,104			0	0	0	0
NFLP	0	0	0	0	0	0	10,252
LDS – Dental	0	0	0	0	0	900	887
LDS – Medical	0	0	19,182	19,700	37,801	0	0
Institutional Matching Total	\$2,104	\$0	\$19,182	\$19,700	\$37,801	\$11,564	\$13,233
Collections <i>Principal, interest, investment income and late fees</i>							
FPLP – Perkins	\$997,999	\$1,344,652	\$866,470	\$578,657	\$553,637	\$709,817	\$656,802
HPSLP – Dental	807,665	811,625	361,652	291,751	240,231	415,936	746,881
HPSLP – Medical	-	-	-	105,863	91,739	75,979	55,027
Nursing SLP - UG	4,818	6,979	6,733	3,409	505	5,729	2,483
Nursing SLP – GR	24,992	33,825	15,492	23,793	17,095	14,989	22,530
LDS - Dental	74,687	107,511	21,820	14,551	30,036	47,383	87,815
LDS - Medical	75,074	114,514	62,458	47,463	12,105	42,984	71,976
NFLP	16	520	1,934	15,378	6,850	9,425	7,885
Collections Total	\$1,985,252	\$2,419,626	\$1,336,559	\$1,080,865	\$952,198	\$1,322,242	\$1,651,399
Total Available in Federal Loan Funds	\$2,006,287	\$2,419,626	\$1,528,379	\$1,277,867	\$1,330,206	\$1,437,886	\$1,783,726
Default Rates <i>as of June 30, 2011</i>							
FPLP – Perkins	1.38%		1.38%	1.19%	1.97%	2.64%	5.26%
HPSLP – Dental	0.87%		0.87%	0.57%	0.56%	0.51%	0.45%
HPSLP – Medical	0.77%		0.77%	1.37%	0.47%	0.59%	1.30%
Nursing SLP – undergrad	3.98%		3.98%	3.88%	3.63%	3.70%	3.57%
Nursing SLP – graduate	2.40%		2.40%	0.00%	0.00%	1.59%	1.42%
LDS - Dental	1.16%		1.16%	0.74%	2.39%	0.99%	2.31%
LDS - Medical	0.96%		0.96%	1.41%	0.65%	0.57%	0.55%
NFLP			0.77%	17.18%	10.18%	0.00%	10.18%

Legend of Award abbreviations

Federal Perkins Loan Program	FPLP	Undergraduate	UG
Health Professions Student Loan Program	HPSLP	Graduate	GR
Loans for Disadvantaged Students	LDS	Nurse Faculty Loan Program	NFLP
Student Loan Program	SLP		

Total Student Financial Aid Awards by School FY 2002 - 2011

source: [Wanda Williams](#), Office of Student Financial Services

	2002		2003		2004		2005	
	#	Award	#	Award	#	Award	#	Award
School of Dentistry	294	\$7,550,651	327	\$8,794,162	319	\$8,813,127	324	\$9,668,470
Graduate School of Biomedical Sciences	130	2,070,586	131	2,293,640	137	2,533,083	132	2,693,296
School of Biomedical Informatics	12	85,104	11	110,051	22	234,484	15	239,955
Medical School	719	18,973,294	738	20,827,867	718	21,529,033	721	23,228,144
Nursing	268	3,248,887	323	4,679,332	321	4,860,601	350	5,939,091
Public Health	186	2,673,789	207	3,280,479	212	3,554,429	234	4,075,863
Grand Total	1,609	\$34,602,311	1,737	\$39,985,531	1,729	\$41,524,757	1,776	\$45,844,819

	2006		2007		2008		2009	
	#	Award	#	Award	#	Award	#	Award
School of Dentistry	319	\$10,098,547	325	\$11,156,328	356	\$12,827,737	372	\$13,941,438
Graduate School of Biomedical Sciences	133	2,672,246	120	2,156,501	101	2,351,961	106	2,164,704
School of Biomedical Informatics	11	198,939	8	110,664	6	123,799	5	89,500
Medical School	746	25,042,803	724	24,736,847	715	24,247,384	726	25,242,011
Nursing	377	5,863,146	357	5,343,772	372	6,322,372	409	6,538,160
Public Health	285	4,516,134	202	3,460,205	210	4,016,634	187	3,429,697
Grand Total	1,871	\$48,391,815	1,736	\$46,964,317	1,760	\$49,889,887	1,805	\$51,405,510

	2010		2011	
	#	Award	#	Award
School of Dentistry	398	\$15,487,789	390	\$15,401,183
Graduate School of Biomedical Sciences	106	2,189,994	86	1,705,729
School of Biomedical Informatics	10	156,642	10	141,322
Medical School	795	27,426,174	802	28,342,873
Nursing	519	8,339,203	599	9,743,509
Public Health	324	5,902,227	574	10,369,765
Grand Total	2,152	\$59,502,029	2,461	\$65,704,381

Total Student Financial Aid Awards by Major Program *FY 2003 - 2011*

source: [Wanda Williams](#), Office of Student Financial Services

	2003	2004	2005	2006	2007
LDS – Dental	\$47,000	\$102,000	\$100,000	\$83,000	\$12,000
LDS – Medical	49,400	102,995	160,900	112,000	243,273
FPLP – Perkins	745,900	1,477,296	1,812,319	426,400	446,785
HPSLP – Dental	442,000	460,842	490,000	491,500	1,188,000
HPSLP – Medical	0	0	0	0	0
Nursing SLP – undergraduate	0	0	0	0	0
Nursing SLP – graduate	32,000	37,000	24,486	24,700	25,000
Nurse Faculty Loan Program	0	0	0	0	0
Health Education Loan Program	0	0	0	0	0
FFELP Subsidized Stafford Loans	11,740,909	11,807,104	12,423,291	12,853,060	11,776,797
FFELP Unsubsidized Stafford Loans	21,965,109	22,905,901	24,957,628	26,867,027	27,603,765
Institutional and other loans and scholarships	4,963,214	4,638,619	5,876,195	0	5,668,697
Grand Total	\$39,985,532	\$41,531,757	\$45,844,819	\$40,857,687	\$46,964,317

	2008	2009	2010	2011
LDS – Dental	\$94,509	\$0	\$9,000	\$45,000
LDS – Medical	285,454	378,008	9,000	107,248
FPLP – Perkins	1,704,479	246,600	390,229	735,572
HPSLP – Dental	1,150,913	0	106,644	305,400
HPSLP – Medical	0	0	0	0
Nursing SLP – undergraduate	0	0	0	0
Nursing SLP – graduate	28,500	24,000	35,178	24,800
Nurse Faculty Loan Program	0	0	0	29,930
Health Education Loan Program	0	0	17,583	0
FFELP Subsidized Stafford Loans	11,830,422	12,011,944	14,227,458	16,568,772
FFELP Unsubsidized Stafford Loans	26,803,001	31,107,177	36,045,586	39,299,115
Institutional and other loans and scholarships	7,992,610	7,637,781	8,661,351	8,588,544
Grand Total	\$49,889,888	\$51,405,510	\$59,502,029	\$65,704,381

Average Student Financial Aid Awards by School *FY 2003 - 2011*

source: [Wanda Williams](#), Office of Student Financial Services

Note: this is the average of those students receiving aid.

	2003	2004	2005	2006	2007
School of Dentistry	\$26,893	\$27,646	\$29,841	\$31,657	\$34,327
Graduate School Biomedical Sciences	17,509	18,490	20,404	20,092	17,971
School of Biomedical Informatics	10,005	10,704	15,997	18,085	13,833
Medical School	28,222	29,985	32,217	33,569	34,167
School of Nursing	14,487	15,142	16,969	15,552	14,969
School of Public Health	15,848	16,766	17,418	15,846	17,130
Grand Total	\$112,964	\$118,733	\$132,846	\$134,801	\$132,397
Combined Average	\$18,827	\$19,789	\$22,141	\$22,467	\$22,467

	2008	2009	2010	2011
School of Dentistry	\$36,033	\$37,477	\$38,914	\$39,490
Graduate School Biomedical Sciences	23,287	20,422	20,660	19,834
School of Biomedical Informatics	20,633	17,900	15,664	14,132
Medical School	33,912	34,769	34,498	35,340
School of Nursing	16,996	15,986	16,068	16,266
School of Public Health	19,127	18,341	18,217	18,066
Grand Total	\$149,988	\$144,895	\$144,021	\$143,128
Combined Average	\$27,053	\$28,480	\$27,650	\$26,698

Average Student Debt on Graduation *FY 2003 - 2011*

source: [Wanda Williams](#), Office of Student Financial Services

Note: this is the average of those students receiving aid.

	2003	2004	2005	2006	2007
School of Dentistry - DDS	\$77,156	\$88,924	\$96,260	\$130,982	\$114,128
School of Dentistry - Dental Hygiene	16,880	18,801	30,798		
School of Dentistry - Post Grad	35,147	46,375	58,686		
Graduate School of Biomedical Sciences	28,150	36,933	37,892		
School of Biomedical Informatics	35,442	23,804	34,900		
Medical School (MD)	78,898	83,635	98,345	122,364	111,834
School of Nursing - Undergraduate	14,002	16,210	28,886		
School of Nursing - Graduate	33,164	34,374	29,491		
School of Public Health	28,557	27,522	40,030		
	2008	2009	2010	2011	
School of Dentistry - DDS	\$127,422	\$129,571	\$141,294	\$137,040	
School of Dentistry - Dental Hygiene		27,690	34,067	27,864	
School of Dentistry - Post Grad		61,303	92,666	99,590	
Graduate School of Biomedical Sciences		47,380	52,198	73,803	
School of Biomedical Informatics		67,519	35,442	34,125	
Medical School (MD)	116,197	115,796	116,409	112,746	
School of Nursing - Undergraduate		18,918	22,438	18,504	
School of Nursing - Graduate		44,051	52,334	45,133	
School of Public Health		40,731	53,932	43,347	

Total Graduates by School

source: [Robert Jenkins](#), Office of the Registrar

School of Dentistry <i>1943 - present</i>	10,283
Graduate School of Biomedical Sciences <i>1963 - present</i>	2,209
School of Biomedical Informatics <i>2010 - present</i>	30
School of Health Information Sciences <i>1998 - 2009</i>	134
School of Allied Health Sciences <i>1973 - 1996</i>	2,019
Medical School <i>1970 - present</i>	6,273
School of Nursing <i>1972 - present</i>	8,131
School of Public Health <i>1967 - present</i>	5,782
<hr/>	
Grand Total UTHealth <i>(all degrees, all years)</i>	34,861

Research Expenditures by Unit *FY 2007 - 2011*

source: [Vanessa McKeown](#), Office of Budget & Financial Reporting

	FY 2007	FY 2008	FY 2009	FY 2010	FY 2011
School of Dentistry	\$1,375,730	\$1,148,042	\$1,853,479	\$2,472,447	\$3,668,681
Medical School	114,910,934	113,745,513	117,268,868	130,919,295	158,711,066
School of Biomedical Informatics	1,885,972	2,012,164	2,835,099	4,867,324	7,348,731
School of Nursing	1,449,821	1,455,079	1,713,043	1,872,930	1,911,299
School of Public Health	38,602,836	38,127,815	42,149,574	47,881,679	57,502,938
Harris County Psychiatric Center	120,386	281,041	103,876	54,292	211,573
Institute of Molecular Medicine	12,565,639	13,040,131	10,477,248	23,413,549	
Academic Support Area ¹	20,812,809	27,441,963	41,222,493	29,291,032	31,818,129
Grand Total	\$191,724,126	\$197,251,748	\$217,623,681	\$240,772,548	\$261,172,417

¹ Includes Indirect Cost Recoveries and Capital Outlay (pertains to all research expenditure tables).

Notes (pertains to all research tables):

1. Because faculty in the Graduate School of Biomedical Sciences hold their primary appointments in another school/institution, their respective research proposals/awards/expenditures are reported accordingly, and not through GSBS. Prior year figures represent research activity from GSBS Academic A&P staff.
2. Beginning in FY 2011, Medical School research activity includes the Institute of Molecular Medicine.

UT Health-Related Institutions Research Expenditures by Source FY 2010

source: [Research Expenditures for Texas Institutions of Higher Education](#), The Texas Higher Education Coordinating Board

Institution	Federal	Appropriated	Contracts & Grants	Institution	Profit	Non-Profit	Total
UTHealth	\$150,323,653	\$17,922,267	\$25,594,744	\$11,579,402	\$9,112,235	\$26,240,251	\$240,772,552
UTHSC at San Antonio	121,723,410	6,240,743	708,627	20,876,076	22,353,048	13,327,114	185,229,018
UTHSC at Tyler	7,250,324	2,339,810	0	3,239,671	505,126	1,043,201	14,378,132
UT M.D. Anderson Cancer Center	206,664,447	176,461,762	343,967	31,196,240	50,712,121	81,656,207	547,034,744
UTMB-Galveston	128,839,602	904,248	770,439	7,832,111	3,665,187	14,813,417	156,825,004
UT Southwestern Medical Center at Dallas	232,026,985	45,845,077	3,972,059	18,729,024	19,615,858	75,125,933	395,314,936
Grand Total	\$846,828,421	\$249,713,907	\$31,389,836	\$93,452,524	\$105,963,575	\$212,206,123	\$1,539,554,386

Trends in UT Health-Related Institutions Research Expenditures FY 2007 - 2010

source: [Research Expenditures for Texas Institutions of Higher Education](#), The Texas Higher Education Coordinating Board

Institution	2007	2008	2009	2010	Percent Change 2007-2010
UTHealth	\$191,724,126	\$197,251,749	\$217,623,681	\$240,772,552	25.58%
UTHSC at San Antonio	146,338,142	188,620,797	193,453,307	185,229,018	26.58%
UTHSC at Tyler	13,550,150	13,702,579	14,261,385	14,378,132	6.11%
UT M.D. Anderson Cancer Center	444,932,707	488,654,827	510,272,742	547,034,744	22.95%
UTMB-Galveston	156,103,865	153,461,284	153,713,920	156,825,004	0.46%
UT Southwestern Medical Center at Dallas	341,110,600	371,101,500	383,468,610	395,314,936	15.89%
Grand Total	\$1,293,759,590	\$1,412,792,736	\$1,472,793,645	\$1,539,554,386	19.00%

Research Expenditures by Fund Source *FY 2011*

source: [Vanessa McKeown](#), Office of Budget & Financial Reporting

	Total	Federal	State	Local	Private	Other - Appropriated	Other - Designated
School of Dentistry	\$3,668,681	\$2,533,646	\$229,815		\$895,908		\$9,312
Medical School	158,711,066	88,137,270	32,111,378		26,649,250	8,582,724	3,230,443
School of Biomedical Informatics	7,348,731	5,626,151	86,332		1,567,032		69,217
School of Nursing	1,911,299	1,248,247	47,571		615,481		
School of Public Health	57,502,938	46,119,233	1,795,345	36,121	7,407,144	1,657,984	487,111
Harris County Psychiatric Center	211,573				211,573		
Academic Support Area	31,818,129	13,125,499	293,961		1,507,535	10,183,982	6,707,152
Grand Total	\$261,172,417	\$156,790,046	\$34,564,402	\$36,121	\$38,853,923	\$20,424,689	\$10,503,235

Grant Proposals by Unit & Type FY 2009 - 2011

source: [Jodi Oqden](#), Office of Sponsored Projects

	FY 2009 \$	#	FY 2010 \$	#	FY 2011 \$	#
School of Dentistry						
Fellowship/Scholarship	\$47,400	2	\$5,000	1	\$2,000	1
Instruction	604,980	2	2,213,114	5	300,000	1
Research	27,620,735	59	30,454,235	55	14,970,913	34
Total SOD	\$28,273,115	63	\$32,672,349	61	\$15,272,913	36
Graduate School Biomedical Sciences						
Fellowship/Scholarship	0	0	\$46,000	1	0	0
Instruction	11,856	2	0	0	0	0
Research	0	0	8,190	1	0	0
Total GSBS	\$11,856	2	\$54,190	2	\$0	0
Medical School						
Fellowship/Scholarship	\$3,197,235	39	\$4,102,900	44	\$5,789,424	55
Instruction	2,956,645	20	57,690,259	43	20,323,464	28
Research	619,730,614	988	632,843,442	806	799,437,491	845
Other	11,645,185	29	40,467,545	37	10,640,708	32
Total MS	\$637,529,679	1,076	\$735,104,146	930	\$836,191,087	960
School of Biomedical Informatics						
Fellowship/Scholarship	212,158	3	\$306,425	5	\$52,168	1
Instruction	1,217,996	2	18,439,259	5	1,500,000	2
Research	56,442,960	74	82,723,512	65	18,383,720	41
Other	264,379	2	83,974,287	5	316,924	2
Total SMBI	\$58,137,493	81	\$185,443,483	80	\$20,252,812	46
School of Nursing						
Fellowship/Scholarship	\$	0	\$241,889	2	\$30,000	1
Instruction	3,508,713	6	2,631,706	9	1,018,666	3
Research	14,475,494	31	8,190,966	31	3,533,730	14
Other	0	0	244,463	1	278,015	2
Total SON	\$17,984,207	37	\$11,309,024	43	\$4,860,411	20
School of Public Health						
Fellowship/Scholarship	\$7,000	3	\$85,610	4	\$106,860	2
Instruction	2,669,350	17	21,332,802	19	7,254,875	10
Research	404,031,303	345	306,286,529	343	254,345,889	355
Other	61,988	5	3,979,761	4	5,752,566	12
Total SPH	\$406,769,641	370	\$331,684,702	370	\$267,460,190	379
Institute of Molecular Medicine						
Fellowship/Scholarship	\$2,421,258	7	\$618,000	3		
Instruction	0	0	1,488,322	1		
Research	109,904,105	159	201,545,178	164		
Other	472,505	1	79,835	1		
Total IMM	\$112,797,868	167	\$203,731,335	169		
University Administration						
Fellowship/Scholarship	\$2,139,441	8	\$0	0	\$0	0
Instruction	0	0	168,752	1	523,853	2
Research	75,802,719	55	16,199,656	6	5,211,967	8
Other	2,136,348	2	6,410,586	1	0	0
Total UA	\$80,078,508	65	\$22,778,994	8	\$5,735,820	10
Harris County Psychiatric Center						
Research	32,838	1	0	0	\$2,029,784	1
Other	285,000	1	0	0	2,416	1
Total HCPC	\$317,838	2	\$0	0	\$2,032,200	2
UTHealth Total						
Fellowship/Scholarship	\$8,024,492	62	\$5,405,824	60	\$5,980,452	60
Instruction	\$10,969,540	49	\$103,964,214	83	\$30,920,858	46
Research	\$1,308,040,768	1,712	\$1,278,251,708	1471	\$1,097,913,494	1298
Other	\$14,865,405	40	\$135,156,477	49	\$16,990,629	49
Grand Total UTHealth	\$1,341,900,205	1,863	\$1,522,778,223	1,663	\$1,151,805,433	1,453

Contract & Grant Awards by Unit & Type FY 2010 - 2011

source: [Jodi Ogden](#), Office of Sponsored Projects

	FY 2010	#	FY 2011	#
School of Dentistry				
Fellowship/Scholarship	\$5,000	1	\$2,000	1
Instruction	299,990	1	1,648,633	3
Research (<i>includes Clinical Studies</i>)	3,968,397	28	4,715,423	20
Other			2,000	1
Total SOD	\$4,273,387	30	\$6,368,056	25
Grad School Biomedical Sciences				
Fellowship/Scholarship	\$0	0	\$46,000	1
Instruction	12,536	1	47,134	6
Research (<i>includes Clinical Studies</i>)	8,190	1		
Total GSBS	\$20,726	2	\$93,134	7
Medical School				
Fellowship/Scholarship	\$602,816	17	\$1,647,363	29
Instruction	1,569,919	18	1,995,448	16
Research (<i>includes Clinical Studies</i>)	159,163,690	532	163,096,083	576
Other	18,354,982	19	32,047,441	37
Total MS	\$179,691,407	586	\$198,786,335	658
School of Biomedical Informatics				
Fellowship/Scholarship	\$309,269	6	\$99,424	2
Instruction	1,446,552	3	506,608	3
Research (<i>includes Clinical Studies</i>)	19,828,105	25	2,575,350	23
Other	15,514,474	4	1,437,105	7
Total SBMI	\$37,098,400	38	\$4,618,487	35
School of Nursing				
Fellowship/Scholarship	\$15,000	1		
Instruction	391,133	6	72,265	4
Research (<i>includes Clinical Studies</i>)	1,433,369	13	494,237	5
Other	244,463	1	246,908	1
Total SON	\$2,083,965	21	\$813,410	10
School of Public Health				
Fellowship/Scholarship	\$60,282	1	\$78,500	2
Instruction	2,643,406	10	3,283,990	10
Research (<i>includes Clinical Studies</i>)	64,799,091	214	58,358,445	225
Other	718,415	9	2,711,671	6
Total SPH	\$68,221,194	234	\$64,432,606	243
Institute of Molecular Medicine				
Fellowship/Scholarship	\$452,582	3		
Instruction	611,684	2		
Research (<i>includes Clinical Studies</i>)	17,746,446	54		
Other	179,634	1		
Total MM	\$18,990,346	60		
University Administration				
Instruction	\$0	0	\$500,000	1
Research (<i>includes Clinical Studies</i>)	305,270	3		
Other	60,011	1		
Total UA	\$365,281	4	\$500,000	1
Harris County Psychiatric Center				
Research (<i>includes Clinical Studies</i>)	\$0	0	\$268,739	1
Total HCPC	\$0	0	\$268,739	1
UTHealth Totals				
Fellowship/Scholarship	\$1,444,949	29	\$1,873,287	35
Instruction	\$6,975,220	41	\$8,054,078	43
Research (<i>includes Clinical Studies</i>)	\$267,252,558	870	\$229,508,277	850
Other	\$35,071,979	35	\$36,445,125	52
Grand Total UTHealth	\$310,744,706	975	\$275,880,767	980

Contract & Grant Awards by Source FY 2009 - 2011

source: [Jodi Ogden](#), Office of Sponsored Projects

	FY 2009		FY 2010		FY 2011	
	\$	#	\$	#	\$	#
School of Dentistry						
Federal	\$1,454,307	8	\$2,962,001	13	\$5,478,743	16
State	0	0	50,000	1	527,187	4
Local	\$24,425	1	12,213	1	38,136	1
Private	1,066,211	16	1,249,173	15	323,990	4
Total SOD	\$2,544,943	25	\$4,273,387	30	\$6,368,056	25
Grad School Biomedical Sciences						
Federal	\$0	0	\$8,190	1	\$0	0
Private	11,856	1	12,536	1	0	0
Total GSBS	\$11,856	1	\$20,726	2	\$0	0
Medical School						
Federal	\$88,642,345	334	\$122,051,808	345	\$140,612,780	414
State	23,643,215	18	36,188,501	24	26,436,405	32
Local	30,000	1	-	0	504	1
Private	16,463,128	195	21,451,098	217	31,829,780	218
Total MS	\$128,778,688	548	\$179,691,407	586	\$198,879,469	665
School of Biomedical Informatics						
Federal	2,288,945	24	\$35,327,131	31	\$4,371,478	30
State	149,500	2	532,271	3	-	0
Private	784,919	8	1,238,998	4	247,009	5
Total SBMI	\$3,223,364	34	\$37,098,400	38	\$4,618,487	35
School of Nursing						
Federal	\$1,931,529	10	\$1,854,312	13	\$748,698	6
State	0	0	0	0	-	0
Local	0	0	-	0	-	0
Private	436,722	11	229,653	8	64,712	4
Total SON	\$2,368,251	21	\$2,083,965	21	\$813,410	10
School of Public Health						
Federal	\$48,847,595	148	\$56,240,185	168	\$55,997,042	183
State	546,761	6	4,119,723	15	2,916,256	11
Local	114,710	2	199,415	3	168,495	4
Private	4,828,700	41	7,661,871	48	5,350,813	45
Total SPH	\$54,337,766	197	\$68,221,194	234	\$64,432,606	243
Institute of Molecular						
Federal	\$12,286,158	36	\$9,215,672	34		
State	0	0	1,517,107	4		
Local	0	0	0	0		
Private	2,887,194	23	8,257,567	22		
Total IMM	\$15,173,352	59	\$18,990,346	60		
University Administration						
Federal	\$10,510,928	14	\$305,270	3	\$500,000	1
State	102,845	1	0	0	0	0
Private	848,043	4	60,011	1	0	0
Total UA	\$11,461,816	19	\$365,281	4	\$500,000	1
Harris County Psychiatric Center						
Federal	\$282,150	1	\$0	0	\$0	0
Private	0	0	\$0	0	\$268,739	1
Total HCPC	\$282,150	1	\$0	0	\$268,739	1
UTHealth Totals						
Federal	\$166,243,957	575	\$227,964,569	608	\$207,708,741	650
State	24,442,321	27	42,407,602	47	29,879,848	47
Local	169,135	4	211,628	4	207,135	6
Private	27,326,773	299	40,160,907	316	38,085,043	277
Grand Total UTHealth	\$218,182,186	905	\$310,744,706	975	\$275,880,767	980

Intellectual Property Activity *FY 2005 - 2011*

source: [Christine Flynn](#), Office of Technology Management

	2005	2006	2007	2008	2009	2010	2011
Invention Disclosures	49	57	59	62	65	63	72
New US Patent Applications Filed ¹	20	29	40	32	37	48	43
Licenses/Options Executed	36	34	25	25	25	25	22
Licenses & Options Generating Income	48	72	75	73	87	92	87
U.S. patents issued	6	5	10	2	4	11	12
Startup Companies Formed ²	1	3	5	2	3	3	2
Royalty & License Fee income³:	\$3,484,772	\$2,968,302	\$3,729,581	\$2,745,977	\$3,096,183	\$3,385,729	\$3,150,185

¹ Includes US provisional, utility, and PCT applications that do not have a US counterpart utility application.

² Includes new companies that were established based in part on technologies and discoveries from UTHealth.

³ Includes License Management Fees for FY 2010 forward.

NIH Awards by Unit *FY 2004 - 2011*

source: [Jodi Ogden](#), Office of Sponsored Projects

	FY 2004		FY 2005		FY 2006		FY 2007	
	Amount	#	Amount	#	Amount	#	Amount	#
School of Dentistry	\$1,601,761	8	\$1,995,126	9	\$1,083,455	6	\$1,391,742	6
Graduate School Biomedical Sciences	209,946	1	805,134	3	2,242,231	6	665,138	3
School of Biomedical Informatics	539,952	5	1,354,437	6	1,384,850	5	800,593	3
Medical School	51,232,842	174	52,388,776	157	62,594,908	170	60,915,157	172
School of Nursing	900,416	3	1,033,775	5	885,304	5	232,411	2
School of Public Health	26,897,582	45	22,061,348	34	18,605,488	36	25,728,287	47
Institute of Molecular Medicine	2,812,686	11	1,657,139	6	1,491,173	8	2,914,069	11
University Administration	250,000	1						
Grand Total	\$84,445,185	248	\$81,295,735	220	\$88,287,409	236	\$92,647,397	244

	FY 2008		FY 2009		FY 2010		FY 2011	
	Amount	#	Amount	#	Amount	#	Amount	#
School of Dentistry	\$685,523	3	\$903,860	6	\$2,058,125	10	\$2,013,346	8
Graduate School Biomedical Sciences	853,600	3						
School of Biomedical Informatics	522,067	2	547,936	2	1,914,166	4	\$401,500	2
Medical School	64,810,895	162	60,977,370	202	78,257,842	194	\$70,264,499	223
School of Nursing	2,182,987	5	1,429,473	4	1,150,536	3	\$429,525	1
School of Public Health	16,807,987	41	21,904,703	51	39,771,948	65	\$35,164,214	68
Institute of Molecular Medicine	4,738,254	14	9,290,462	28	7,858,227	23		
University Administration	0	0	874,698	3	\$0	0	\$0	0
Grand Total	\$90,601,313	230	\$97,051,424	296	\$131,010,844	299	\$108,273,084	302

Federal Awards by Agency FY 2008 - 2011

source: [Jodi Ogden](#), Office of Sponsored Projects

	FY 2008		FY 2009		FY 2010		FY 2011	
	\$	#	\$	#	\$	#	\$	#
Public Health Service (includes NIH)	\$127,102,737	457	\$129,527,475	505	\$144,019,294	341	\$116,358,971	328
NASA	2,090,586	7	\$544,188	3	\$160,339	1	\$159,629	1
National Science Foundation	\$301,470	3	\$511,035	6	\$401,339	3	\$692,038	7
Other Federal	19,266,168	52	\$35,661,259	61	\$83,383,597	263	\$90,498,103	314
Grand Total UTHealth	\$148,760,961	519	\$166,243,957	575	\$227,964,569	608	\$207,708,741	650

Principal Investigators by Unit FY 2007 - 2011

source: [Jodi Ogden](#), Office of Sponsored Projects

	FY 2007	FY 2008	FY 2009	FY 2010	FY 2011
School of Dentistry	18	16	15	16	16
Grad School Biomedical Sciences	3	1	1	2	0
School of Biomedical Informatics	11	13	14	16	12
Medical School	276	215	226	246	273
School of Nursing	26	17	11	13	8
School of Public Health	92	78	84	93	101
Institute of Molecular Medicine	1	15	18	24	
Harris County Psychiatric Center	0	0	1	0	1
University Administration	25	4	7	2	1
Grand Total UTHealth	452	359	377	412	412

Sponsored Project Activity Report *FY 2011*

source: [Vanessa McKeown](#), Office of Budget & Financial Reporting

	Total	Direct Costs	Indirect Costs
Medical School	\$177,20,4313	\$146,181,964	\$31,022,349
School of Dentistry	5,668,105	4,857,965	810,139
Graduate School of Biomedical Sciences	1,965,740	1,965,740	
School of Biomedical Informatics	10,357,673	8,081,145	2,276,528
School of Nursing	5,540,868	5,145,900	394,968
School of Public Health	60,056,838	49,511,108	10,545,731
Other ¹	15,480,253	13,401,844	2,078,409
Grand Total	\$276,273,790	\$229,145,665	\$47,128,124

¹ Includes Health Science Center - General and UT Harris County Psychiatric Center.

Note: Data represent amounts expended, not awarded

MSRDP Summary of Operations FY 2011

source: [Angela Smith](#), Medical School

For the Year Ended August 31, 2011 (unaudited)

Operating Revenues

Gross Patient Charges	
Gross Patient Charges Related to Uncompensated Care	\$452,671,166.00
Other Gross Patient Charges	190,010,187.00
Total Gross Patient Charges	642,681,353.00

Less: Discounts and Allowances

Contractual Allowances - Medicaid	(183,417,232.06)
Contractual Allowances - Medicare	(83,666,207.09)
Contractual Allowances - Managed Care and Other Insurance	(121,792,534.45)
Other Unreimbursed Medical Charges	(80,873,898.42)
Bad Debt Expense	(24,862,538.00)
Total Discounts and Allowances	(494,612,410.02)

Net Patient Revenues **148,068,942.98**

Contractual Revenues	162,065,095.77
Other Operating Revenues	5,439,890.99
Total Operating Revenues	315,573,929.74

Operating Expenses

Faculty Salaries	148,490,268.93
Staff Salaries	59,887,083.74
Fringe Benefits	38,611,732.97
Maintenance and Operations	43,266,238.68
Travel	1,873,116.18
Official Functions	595,336.85
Other Expenses	3,520,471.29
Total Operating Expenses	296,244,248.64

Operating Income (Loss) **19,329,681.10**

Nonoperating Revenues (Expenses)

Gift Contributions for Operations	100.00
Investment Income	5,294,502.07
Net Increase (Decrease) in Fair Value of Investments	(81,978.48)
<u>Other Nonoperating Revenues (Expenses)</u>	
Net Nonoperating Revenues (Expenses)	5,212,623.59

Income (Loss) Before Other Revenues, Expenses, Gains or Losses **24,542,304.69**

Transfers In

Interfund/Interagency	(8,896,792.27)
Transfers Out:	
Capital Outlay	(5,194,177.56)

Change in Net Assets **10,451,334.86**

Net Assets - September 1, 2010 **72,090,498.45**

Net Assets - August 31, 2011 **\$82,541,833.31**

Note: Includes the operations of the nonprofit healthcare corporation.

UT Harris County Psychiatric Center Clinical Activity FY 2000-2010

source: [Geri Konigsberg](#), UT Harris County Psychiatric Center

	FY 2000	FY 2001	FY 2002	FY 2003	FY 2004	FY 2005
Average Daily Census	149.3	166.1	189.2	189.8	138.7	171.5
Number of Admissions	5,186	5,700	6,135	6,074	5,390	5,654
Patient Days	54,647	60,614	69,044	69,259	50,631	62,589
Discharge Days	54,718	60,043	69,009	69,021	50,976	62,863
Average Length of Stay	10.6	10.6	11.3	11.3	9.4	11.1
Occupancy	81.6%	87.2%	86.2%	87.4%	72.5%	85.80%
	FY 2006	FY 2007	FY 2008	FY 2009	FY 2010	
Average Daily Census	163	162.6	176	177	206.96	
Number of Admissions	5,490	5,500	5,077	5,177	7,125	
Patient Days	59,504	59,367	64,446	66,171	75,541	
Discharge Days	58,891	57,609	64,115	66,172	69,505	
Average Length of Stay	10.7	10.5	12.7	12.78	9.75	
Occupancy	85.40%	82.80%	89.34%	87.00%	87.36%	

Un-sponsored Charity Care FY 2002-2011

Source: Performance Measures Report to the Legislative Budget Board

	Total Un-sponsored Charity Care	Medical School	Harris County Psychiatric Center	School of Dentistry
FY 2002	\$128,804,283	\$103,279,853	\$24,762,283	\$762,147
FY 2003	133,903,824	107,326,617	25,605,346	971,861
FY 2004	163,072,970	139,031,049	22,771,695	1,270,226
FY 2005	199,366,505	172,229,739	25,500,776	1,635,990
FY 2006	225,313,571	185,910,119	38,318,052	1,085,400
FY 2007	<i>Corrected numbers not available at press time</i>			
FY 2008	218,792,782	186,659,334	31,019,203	1,114,245
FY 2009	226,276,212	197,531,830	27,593,563	1,150,819
FY 2010	94,477,006	64,720,025	27,780,968	1,976,013
FY 2011	64,606,480	63,490,624		1,115,856

Note: The State of Texas definition for Un-sponsored Charity Care changed in FY 2010 resulting in lower cost calculations. Additionally, figures for the UT Harris County Psychiatric Center are no longer required as part of UTHealth's Performance Measures submission, reflecting an additional reduction in the total.

Medical School Outpatient Clinical Activity *FY 2002 - 2011*

Source: Performance Measures Report to the Legislative Budget Board

Total Outpatient Visits

FY 2002	692,609
FY 2003	748,486
FY 2004	834,987
FY 2005	914,903
FY 2006	840,831
FY 2007	980,421
FY 2008	822,214
FY 2009	853,704
FY 2010	826,797
FY 2011	1,016,044

School of Dentistry Clinical Activity: Patient Visits FY 2002 - 2011

source: [Robert Cederberg](#), DDS, School of Dentistry

	2002	2003	2004	2005	2006	2007	2008	2009	2010	2011
Clinics										
Main Campus	56,153	54,346	55,139	58,567	54,637	51,756	54,276	54,807	55,659	51,402
Houston Medical Center	4,377	4,703	8,058	4,907	4,666	4,480	5,095	4,738	4,337	4,084
Smith Tower	3,354	3,032	2,076	2,555	3,022	1,169	1,733	1,849	2,043	2,098
University Dental Center (UTHPB)	4,709	4,564	3,992	6,419	4,040	3,720	4,534	6,892	8,029	7,766
Clinics Subtotal:	68,593	66,645	69,265	72,448	66,365	61,125	65,638	68,286	70,068	65,350
Outreach										
Bering Dental Center	1,098	1,788	543	859	533	499	428	424	333	400
Brazos Valley						618	708	2,165	1,758	1,314
Brownsville										
City of Houston La Casa						351	998	1,058	799	1,076
Eastwood Clinic	720	981								
Harris County Health Department	490	490	724	577	387	296	349	437	324	573
HOPE Clinic										180
Laredo										
Mobile Dental Van			2,118	2,540	1,639	2,150	2,215	1,928	1,725	1,791
Richmond State School	23	32	27	5						
Rusk Elementary	1,204	682								
San Jose Clinic	125	93	125	112	101					
Veterans Administration	106	126	132	142	126	121	162	317	285	294
Outreach Subtotal:	3,766	4,192	3,669	4,235	2,786	4,035	4,860	6,329	5,224	5,628
Hospitals										
Ben Taub	10,503	10,713	11,132	10,824	9,960	4,567	5,071	5,841	6,464	6,398
Lyndon B. Johnson	1,334	4,759	4,517	1,587	2,525	3,061	3,279	3,116	2,927	3,628
M.D. Anderson	401	0	413	0						
Memorial Hermann	2,592	956	880	1,233	908	592	550	680	789	251
Methodist	76	102	39	33	30	35	33	47	34	52
St. Lukes Episcopal	1	2								
Texas Children's	11	10	12	5						
TIRR	29	26	10	14						
Veterans Administration	3,775	3,699	3,635	6,487	3,378	3,974	4,532	4,350	4,501	4,792
Hospital Subtotal:	18,722	20,267	20,638	20,183	16,801	12,229	13,465	14,034	14,715	15,121
Grand Total - Visits	91,081	91,104	93,572	96,866	85,952	77,389	83,963	88,649	90,007	86,099

School of Dentistry Clinical Activity: Patient Treatments FY 2002 - 2011

source: [Robert Cederberg](#), DDS, School of Dentistry

	2002	2003	2004	2005	2006	2007	2008	2009	2010	2011
Clinics										
Main Campus	127,207	128,686	134,675	142,171	131,477	142,066	143,348	155,791	154,983	142,875
Houston Medical Center	31,257	72,862	46,889	42,088	59,446	38,572	46,469	39,941	49,902	38,781
Smith Tower	4,965	5,479	4,432	4,061	4,083	2,381	2,096	2,061	2,335	2,355
University Dental Center (UTHPB)	11,579	11,053	9,238	12,230	10,861	168	4,612	6,965	7,981	7,845
Clinics Subtotal:	175,008	218,080	195,234	200,550	205,867	183,187	196,525	204,758	215,201	191,856
Outreach										
Bering Dental Center	1,467	1,491	909	343	327	339	258	246	220	244
Brazos Valley						1,122	1,669	3,483	7,932	1,780
Brownsville										
City of Houston La Casa						608	2,083	3,393	3,959	3,487
Eastwood Clinic	1,307	1,690								
Harris County Health Department	866	1,390	2,131	1,836	1,178	964	946	827	626	1,161
HOPE Clinic										251
Laredo										
Mobile Dental Van			4,943	6,497	4,175	7,556	9,437	7,545	5,900	5,639
Richmond State School	140	175	309	20						
Rusk Elementary	2,549	1,324								
San Jose Clinic	482	216	238	238	332					
Veterans Administration	412	254	386	379	309	238	363	729	733	810
Outreach Subtotal:	7,223	95,934	8,916	9,313	6,321	10,827	14,756	16,223	19,370	13,372
Hospitals										
Ben Taub	12,528	12,779	13,975	12,932	10,236	3,091	3,639	3,701	3,059	6,756
Lyndon B. Johnson	2,535	9,041	8,963	1,147	1,147	1,507	1,778	1,765	1,627	3,885
M.D. Anderson	916	0	813	0						
Memorial Hermann	3,370	4,780	2,822	4,500	3,530	2,812	3,123	3,260	4,191	3,157
Methodist	760	510	39	33	30	35	33	47	34	52
St. Lukes Episcopal	12	10								
Texas Children's	77	50	62	5						
TIRR	35	34	12	14						
Veterans Administration	6,260	6,135	5,987	10,338	8,840	9,461	12,056	11,082	10,408	12,023
Hospital Subtotal:	26,493	33,339	32,673	28,969	23,783	16,906	20,629	19,855	19,319	25,873
Grand Total - Treatments	208,724	347,353	236,823	238,832	235,971	210,920	231,910	240,836	253,890	231,101

UT Health Services Patient Visits FY 2005 - 2011

source: [Tom Mackey, PhD](#), UT Health Services

Activity	2005	2006	2007	2008	2009	2010	2011
Employee Visits	3,742	2,438	2,421	2,330	2,364	9,640	5,699
Private Patient Visits	5,490	7,651	10,732	7,054	5,506	4,805	4,670
Total Visits	9,232	10,089	13,153	9,384	7,870	14,445	10,369

Faculty by Full-time/Part-time Status *Fall 2006 - 2011*

source: PeopleSoft HCM, Certified CBM008 Faculty Report to the Texas Higher Education Coordinating Board

	Fall 2006		Fall 2007		Fall 2008		Fall 2009		Fall 2010		Fall 2011	
	FT	PT	FT	PT	FT	PT	FT	PT	FT	PT	FT	PT
School of Biomedical Informatics	15		23	2	25	3	28	1	25	4	15	2
School of Dentistry	73	71	88	71	90	75	100	71	82	78	92	81
Medical School	742	90	790	50	813	66	930	75	955	117	951	111
School of Nursing	58	18	58	20	64	33	69	27	54	76	59	40
School of Public Health	155	13	161	12	156	12	159	15	157	23	147	29
The Brown Foundation Institute of Molecular Medicine	24	1	29		31		39	1				
University Administration	13		15	3	19	2	13	1	11	3	8	3
Grand Total	1,080	193	1,164	158	1,198	191	1,338	191	1,284	301	1,272	266

Notes (pertains to all faculty and employee tables):

1. Faculty in the Graduate School of Biomedical Sciences are counted in their school of primary appointment.
2. Beginning in Fall 2011, Medical School counts include Institute of Molecular Medicine faculty and/or staff.

Without Salary Faculty Appointments *FY 2002 - 2011*

source: [Kathy Rodgers](#), Academic & Research Affairs

Unit	2002	2003	2004	2005	2006	2007	2008	2009	2010	2011
Medical School	436	481	430	413	405	445	420	419	477	474
School of Dentistry	169	106	86	87	92	101	94	89	97	107
Graduate School of Biomedical Sciences	296	290	320	343	372	385	502	451	430	438
School of Biomedical Informatics	30	38	32	33	36	38	31	31	32	36
School of Nursing	191	198	177	144	159	168	123	40	44	49
School of Public Health	160	155	173	174	190	223	206	267	267	314
Institute of Molecular Medicine					3	3	3	2	2	
Center for Clinical & Translational Sciences							3	3	3	
Grand Total	1,282	1,268	1,218	1,194	1,257	1,363	1,382	1,302	1,352	1,418

Notes:

Data reflects headcount for persons with no salary or cross appointments at UTHealth.

GSBS figures do not include UTHealth faculty whose primary appointment is with another UTHealth school.

Full-time/Part-time Faculty by Rank *Fall 2011*

source: PeopleSoft HCM, Certified CBM008 Faculty Report to the Texas Higher Education Coordinating Board

	Total		Full-time		Part-time	
	Male	Female	Male	Female	Male	Female
School of Biomedical Informatics						
Professor	4	0	4			
Associate Professor	6	0	6			
Assistant Professor	4	3	3	2	1	1
SBMI Total	14	3	13	2	1	1
School of Dentistry						
Professor	27	6	18	6	9	
Associate Professor	41	16	24	13	17	3
Assistant Professor	41	40	14	16	27	24
Instructor	1	0	1			
Other	1	0			1	
SOD Total	111	62	57	35	54	27
Medical School						
Professor	188	62	156	54	32	8
Associate Professor	112	62	108	55	4	7
Assistant Professor	290	263	277	228	13	35
Instructor	35	48	31	42	4	6
Other	0	2				2
MS Total	625	437	572	379	53	58
School of Nursing						
Professor	0	14		14		
Associate Professor	2	16	1	11	1	5
Assistant Professor	6	25	3	22	3	3
Instructor	8	28	2	6	6	22
Other	0	0				
SON Total	16	83	6	53	10	30
School of Public Health						
Professor	37	13	29	12	8	1
Associate Professor	27	42	19	41	8	1
Assistant Professor	21	28	21	22		6
Instructor	1	1	1			1
Other	5	1	1	1	4	
SPH Total	91	85	71	76	20	9
University Administration						
Professor	2	1	1		1	1
Associate Professor	0	1		1		
Assistant Professor	4	3	3	3	1	
UA Total	6	5	4	4	2	1
UTHealth Total						
Professor	258	96	208	86	50	10
Associate Professor	188	137	158	121	30	16
Assistant Professor	366	362	321	293	45	69
Instructor	45	77	35	48	10	29
Other	6	3	1	1	5	2
Grand Total UTHealth	863	675	723	549	140	126

Faculty by Ethnicity & Gender Fall 2010 - 2011

source: PeopleSoft HCM, Certified CBM008 Faculty Report to the Texas Higher Education Coordinating Board

	Fall 2010			Fall 2011		
	Male	Female	Total	Male	Female	Total
School of Biomedical Informatics						
Asian	7	2	9	4		4
White	14	5	19	9	3	12
Unidentified	1		1	1		1
SBMI Total	22	7	29	14	3	17
School of Dentistry						
Asian	14	18	32	15	17	32
Black	3	4	7	3	4	7
Hispanic	7	11	18	7	10	17
American Indian	1		1			0
White	72	28	100	83	30	113
International			0	1		1
Unidentified	1	1	2	2	1	3
SOD Total	98	62	160	111	62	173
Medical School						
Asian	177	108	285	175	109	284
Black	20	44	64	19	46	65
Hispanic	50	32	82	45	33	78
American Indian	4		4	3		3
White	356	233	589	363	233	596
International			0	13	10	23
Unidentified	27	21	48	7	6	13
MS Total	634	438	1,072	625	437	1,062
School of Nursing						
Asian	2	4	6	3	8	11
Black		17	17		12	12
Hispanic	1	5	6	1	2	3
American Indian		2	2			0
White	11	81	92	12	60	72
Unidentified		7	7		1	1
SON Total	14	116	130	16	83	99
School of Public Health						
Asian	14	10	24	12	10	22
Black	5		5	5		5
Hispanic	7	9	16	7	9	16
White	62	68	130	66	65	131
International					1	1
Unidentified	3	2	5	1		1
SPH Total	91	89	180	91	85	176
University Administration						
Asian	2	2	4	2	1	3
White	5	3	8	3	3	6
Unidentified	1	1	2	1	1	2
UA Total	8	6	14	6	5	11
UTHealth Total						
Asian	216	144	360	211	145	356
Black	28	65	93	27	62	89
Hispanic	65	57	122	60	54	114
American Indian	5	2	7	3	0	3
White	520	418	938	536	394	930
International	0	0	0	14	11	25
Unidentified	33	32	65	12	9	21
Grand Total UTHealth	867	718	1,585	863	675	1,538

Faculty by Tenure Status & Gender *Fall 2010 - 2011*

source: PeopleSoft HCM, Certified CBM008 Faculty Report to the Texas Higher Education Coordinating Board

	Fall 2010			Fall 2011		
	Male	Female	Total	Male	Female	Total
School of Biomedical Informatics						
Tenured	7		7	6		6
Non-tenured, On Track	5	1	6	3		3
Non Tenure Track	10	6	16	5	3	8
SBMI Total	22	7	29	14	3	17
School of Dentistry						
Tenured	12	7	19	20	8	28
Non-tenured, On Track	8	2	10	11	2	13
Non Tenure Track	78	53	131	80	52	132
SOD Total	98	62	160	111	62	173
Medical School						
Tenured	131	42	173	119	43	162
Non-tenured, On Track	56	30	86	53	27	80
Non Tenure Track	447	366	813	453	367	820
MS Total	634	438	1,072	625	437	1,062
School of Nursing						
Tenured		15	15		14	14
Non-tenured, On Track	3	4	7		8	8
Non Tenure Track	14	94	108	16	61	77
SON Total	17	113	130	16	83	99
School of Public Health						
Tenured	40	30	70	38	29	67
Non-tenured, On Track	23	23	46	24	17	41
Non Tenure Track	28	36	64	29	39	68
SPH Total	91	89	180	91	85	176
University Administration						
Tenured	1		1	1	1	2
Non-tenured, On Track	2	1	3			0
Non Tenure Track	5	5	10	5	4	9
UA Total	8	6	14	6	5	11
UTHealth Total						
Tenured	191	94	285	184	95	279
Non-tenured, On Track	97	61	158	91	54	145
Non Tenure Track	582	560	1,142	588	526	1,114
Grand Total UTHealth	870	715	1,585	863	675	1,538

Classified Staff by Ethnicity & Gender Fall 2011

source: PeopleSoft HCM

	Male	Female		Male	Female
School of Biomedical Informatics			University Administration		
Asian	11	7	Asian	34	34
Black	1	5	Black	144	79
Hispanic	1	3	Hispanic	79	61
Am Indian	0	0	Am Indian	2	1
White	5	11	White	172	183
Unidentified	1	0	Unidentified	12	8
SBMI Total	19	26	UA Total	443	366
School of Dentistry			HCPC		
Asian	3	17	Asian	20	26
Black	6	57	Black	92	152
Hispanic	7	50	Hispanic	18	22
Am Indian	1	0	Am Indian	0	0
White	12	36	White	22	34
Unidentified	1	3	Unidentified	2	5
SOD Total	30	163	HCPC Total	154	239
Graduate School of Biomedical Sciences			UTHealth Total		
Asian	1	4	Asian	181	306
Black	0	1	Black	282	607
Hispanic	0	1	Hispanic	181	502
Am Indian	0	0	Am Indian	5	3
White	1	7	White	419	1,075
Unidentified	0	0	Unidentified	32	64
GSBS Total	2	13	Grand Total	1,100	2,557
Medical School					
Asian	95	183			
Black	31	225			
Hispanic	55	274			
Am Indian	0	0			
White	156	672			
Unidentified	11	34			
MS Total	348	1,388			
School of Nursing					
Asian	2	5			
Black	1	28			
Hispanic	3	13			
Am Indian	1	0			
White	7	29			
Unidentified	1	1			
SON Total	15	76			
School of Public Health					
Asian	15	30			
Black	7	60			
Hispanic	18	78			
Am Indian	1	2			
White	44	103			
Unidentified	4	13			
SPH Total	89	286			

Academic A&P Staff by Ethnicity & Gender *Fall 2011*

source: PeopleSoft HCM

	Male	Female		Male	Female
School of Biomedical Informatics			University Administration		
Asian	2	0	Asian	0	0
Black	0	0	Black	0	0
Hispanic	0	0	Hispanic	0	0
Am Indian	0	0	Am Indian	0	0
White	1	0	White	2	0
Unidentified	0	0	Unidentified	0	0
SBMI Total	3	0	UA Total	2	0
School of Dentistry			HCPC		
Asian	0	0	Asian	0	0
Black	0	0	Black	0	0
Hispanic	0	0	Hispanic	0	0
Am Indian	0	0	Am Indian	0	0
White	7	0	White	0	0
Unidentified	0	0	Unidentified	0	0
SOD Total	7	0	HCPC Total	0	0
Graduate School of Biomedical Sciences			UTHealth Total		
Asian	1	0	Asian	10	12
Black	0	0	Black	0	1
Hispanic	0	0	Hispanic	3	1
Am Indian	0	0	Am Indian	0	0
White	1	2	White	53	37
Unidentified	0	0	Unidentified	2	1
GSBS Total	2	2	Grand Total	68	52
Medical School					
Asian	7	12			
Black	0	1			
Hispanic	3	1			
Am Indian	0	0			
White	41	30			
Unidentified	2	1			
MS Total	53	45			
School of Nursing					
Asian	0	0			
Black	0	0			
Hispanic	0	0			
Am Indian	0	0			
White	1	4			
Unidentified	0	0			
SON Total	1	4			
School of Public Health					
Asian	0	0			
Black	0	0			
Hispanic	0	0			
Am Indian	0	0			
White	0	1			
Unidentified	0	0			
SPH Total	0	1			

Management A&P Staff by Ethnicity & Gender *Fall 2011*

source: PeopleSoft HCM

	Male	Female		Male	Female
School of Biomedical Informatics			University Administration		
Asian	0	0	Asian	1	1
Black	0	0	Black	2	2
Hispanic	0	0	Hispanic	1	3
Am Indian	0	0	Am Indian	0	0
White	0	2	White	28	32
Unidentified	0	0	Unidentified	1	0
SBMI Total	0	2	UA Total	33	38
School of Dentistry			HCPC		
Asian	1	0	Asian	0	0
Black	0	1	Black	1	4
Hispanic	0	0	Hispanic	0	0
Am Indian	0	0	Am Indian	0	0
White	1	2	White	0	5
Unidentified	0	0	Unidentified	0	0
SOD Total	2	3	HCPC Total	1	9
Graduate School of Biomedical Sciences			UTHealth Total		
Asian	0	0	Asian	3	4
Black	0	0	Black	4	9
Hispanic	0	0	Hispanic	0	0
Am Indian	0	0	Am Indian	44	68
White	0	1	White	2	6
Unidentified	0	0	Unidentified	2	1
GSBS Total	0	1	Grand Total	55	88
Medical School					
Asian	1	4			
Black	1	1			
Hispanic	2	0			
Am Indian	0	0			
White	11	22			
Unidentified	1	1			
MS Total	16	28			
School of Nursing					
Asian	1	0			
Black	0	0			
Hispanic	0	1			
Am Indian	0	0			
White	1	3			
Unidentified	0	0			
SON Total	2	4			
School of Public Health					
Asian	0	0			
Black	0	0			
Hispanic	0	1			
Am Indian	0	0			
White	3	6			
Unidentified	0	0			
SPH Total	3	7			

Employees by Ethnicity & Gender Fall 2011

source: PeopleSoft HCM

	Male	Female		Male	Female
School of Biomedical Informatics			School of Public Health		
Asian	17	7	Asian	27	40
Black	1	5	Black	12	60
Hispanic	1	3	Hispanic	25	88
Am Indian	0	0	Am Indian	1	2
White	15	16	White	113	175
International	0	0	International	0	1
Unidentified	2	0	Unidentified	5	13
SBMI Total	36	31	SPH Total	183	379
School of Dentistry			University Administration		
Asian	19	34	Asian	37	36
Black	9	62	Black	146	81
Hispanic	14	60	Hispanic	80	64
Am Indian	1	0	Am Indian	2	1
White	103	68	White	205	218
International	1	0	International		
Unidentified	3	4	Unidentified	14	9
SOD Total	150	228	UA Total	484	409
Graduate School of Biomedical Sciences			HCPC		
Asian	2	4	Asian	20	26
Black	0	1	Black	93	156
Hispanic	0	1	Hispanic	18	22
Am Indian	0	0	Am Indian	0	0
White	2	10	White	22	39
International	0	0	International	0	0
Unidentified	0	0	Unidentified	2	5
GSBS Total	4	16	HCPC Total	155	248
Medical School			UTHealth Total		
Asian	278	308	Asian	405	467
Black	51	273	Black	313	679
Hispanic	105	308	Hispanic	244	557
Am Indian	3	0	Am Indian	52	71
White	571	957	White	1,010	1,512
International	13	10	International	14	11
Unidentified	21	42	Unidentified	48	75
MS Total	1,042	1,898	Grand Total	2,086	3,372
School of Nursing					
Asian	6	13			
Black	1	40			
Hispanic	4	16			
Am Indian	1	0			
White	21	96			
International	0	0			
Unidentified	1	2			
SON Total	34	167			

Full-time Equivalent (FTE) Employees by Source of Funds *Fall 2011*

source: [Vanessa McKeown](#), Office of Budget & Financial Reporting

	Faculty	A&P	Classified	Total
Medical School				
State Funds	125.66	22.74	265.90	414.30
Designated Funds	693.21	18.93	553.02	1,265.16
Contracts & Grant Funds	148.30	2.10	357.76	508.16
Current Restricted Funds	60.04	0.35	127.44	187.83
MS Total	1,027.21	44.12	1,304.12	2,375.45
School of Dentistry				
State Funds	110.25	5.00	149.00	264.25
Designated Funds	4.50		21.20	25.70
Contracts & Grant Funds	9.13		8.85	17.98
Current Restricted Funds	0.45		3.25	3.70
SOD Total	124.33	5.00	182.30	311.63
Graduate School of Biomedical Sciences				
State Funds		5.66	15.00	20.66
Designated Funds	0.14			
Contracts & Grant Funds			0.50	0.50
Current Restricted Funds				0.00
GSBS Total	0.14	5.66	15.50	21.16
School of Biomedical Informatics				
State Funds	7.99	1.00	15.79	24.78
Designated Funds	0.47			0.47
Contracts & Grant Funds	8.57		19.68	28.25
Current Restricted Funds	2.03		4.18	6.21
SBMI Total	19.06	1.00	39.65	59.71
School of Public Health				
State Funds	72.03	7.80	100.45	180.28
Designated Funds	6.48	1.35	14.14	21.97
Contracts & Grant Funds	63.38	0.85	145.60	209.83
Current Restricted Funds	16.46	1.00	32.92	50.38
SPH Total	158.35	11.00	293.11	462.46
School of Nursing				
State Funds	59.72	4.39	20.83	84.94
Designated Funds	9.55	2.51	26.74	38.80
Contracts & Grant Funds	4.46	0.10	5.73	10.29
Current Restricted Funds	4.37		5.51	9.88
SON Total	78.10	7.00	58.81	143.91
Harris County Psychiatric Center				
State Funds	18.00	9.80	327.25	355.05
Designated Funds				0.00
Contracts & Grant Funds				0.00
Current Restricted Funds			0.15	0.15
HCPC Total	18.00	9.80	327.40	355.20

continued **Full-time Equivalent (FTE) Employees by Source of Funds**

	Faculty	A&P	Classified	Total
University Administration				
State Funds	1.33	38.29	383.81	423.43
Designated Funds	2.01	19.85	100.02	121.88
Contracts & Grant Funds	1.72	1.82	25.30	28.84
Current Restricted Funds	0.30	1.00	2.69	3.99
UA Total	5.36	60.96	511.82	578.14
All Other				
State Funds		4.00	64.70	68.70
Designated Funds	4.86		37.00	41.86
Contracts & Grant Funds	0.75		0.30	1.05
Current Restricted Funds				0.00
Auxiliary Enterprises	1.37	6.70	48.47	56.54
All Other Total	6.98	10.70	150.47	168.15
UTHealth				
State Funds	394.98	98.68	1,342.73	1,836.39
Designated Funds	721.22	42.64	752.12	1,515.98
Contracts & Grant Funds	236.31	4.87	563.72	804.90
Current Restricted Funds	83.65	2.35	176.14	262.14
Auxiliary Enterprises	1.37	6.70	48.47	56.54
Grand Total UTHealth	1,437.53	155.24	2,883.18	4,475.95

Employees by Employment Category *Fall 2009 - 2011*

source: PeopleSoft HCM

	2009	2010	2011
School of Biomedical Informatics			
Faculty	28	29	17
Academic A&P	3	2	3
Management A&P	2	2	2
Classified	30	49	45
SBMI Total	63	82	67

School of Dentistry			
Faculty	171	160	173
Academic A&P	8	6	7
Management A&P	5	5	5
Classified	192	196	193
SOD Total	376	367	378

Graduate School of Biomedical Sciences			
Faculty			
Academic A&P	2	3	4
Management A&P	2	2	1
Classified	18	16	15
GSBS Total	22	21	20

Medical School			
Faculty	1,046	1,072	1,062
Academic A&P	85	88	98
Management A&P	44	46	44
Classified	1,613	1,729	1,736
MS Total	2,788	2,935	2,940

School of Nursing			
Faculty	96	130	99
Academic A&P	4	7	5
Management A&P	6	6	6
Classified	98	111	91
SON Total	204	254	201

School of Public Health			
Faculty	174	180	176
Academic A&P	2	2	1
Management A&P	9	11	10
Classified	351	420	375
SPH Total	536	613	562

	2009	2010	2011
University Administration			
Faculty	13	14	11
Academic A&P	5	3	2
Management A&P	81	77	71
Classified	760	760	809
UA Total	859	854	893

HCPC			
Faculty	0	0	0
Academic A&P	0	0	0
Management A&P	12	11	10
Classified	393	419	393
HCPC Total	405	430	403

UTHealth Total			
Faculty	1,528	1,585	1,538
Academic A&P	109	111	120
Management A&P	161	160	149
Classified	3,455	3,700	3,657
Grand Total	5,253	5,556	5,464

GSBS Faculty Membership by Institution *Fall 2002 - 2011*

source: [Patricia Bruesch](#), Graduate School of Biomedical Sciences

	2002	2003	2004	2005	2006	2007	2008	2009	2010	2011
School of Dentistry	15	15	12	11	10	10	11	9	9	10
Medical School ^a	137	134	139	139	142	136	140	150	187	200
School of Biomedical Informatics	2	2	5	6	6	6	5	5	5	4
School of Nursing										
School of Public Health	18	18	20	20	19	19	19	18	18	15
UT MD Anderson Cancer Center	269	280	288	314	331	354	360	360	356	363
Texas A&M Institute of Biosciences and Tech	12	12	13	13	13	14	15	12	5	5
Other ^b	27	33	40	36	34	42	27	24	5	4
Grand Total	480	494	517	539	555	581	577	578	585	601

^a As of 2010, includes The Brown Foundation Institute of Molecular Medicine.

^b As of 2010, does not include The Brown Foundation Institute of Molecular Medicine.

State Funds Operating Budget *FY 2006 - 2012*

source: [Vanessa McKeown](#), Office of Budget & Financial Reporting

	FY 2006	FY 2007	FY 2008	FY2009 Revised	FY 2010	FY 2011	FY 2012
Medical School	\$71,696,417	\$76,151,451	\$76,244,934	\$72,913,943	\$75,762,482	\$71,957,357	\$69,153,617
Dental Branch	23,801,166	25,896,942	25,747,475	24,052,942	24,321,436	25,179,434	27,943,307
Graduate School							
Biomedical Sciences	2,796,767	2,847,175	3,252,180	4,068,721	5,486,737	5,773,071	5,826,518
School of Biomedical Information	2,799,617	3,015,364	3,221,593	3,168,725	5,701,311	5,396,539	4,091,883
School of Nursing	9,562,317	10,709,603	10,269,572	10,437,176	9,644,714	9,876,139	11,009,306
School of Public Health	25,333,903	28,005,739	23,529,591	22,472,691	27,924,987	27,466,879	28,414,482
Institute of Molecular Medicine	5,450,992	6,819,650	6,605,822	6,861,563	7,234,278	6,301,899	4,018,962
Harris County Psychiatric Center	31,799,335	31,516,567	34,327,750	50,971,750	50,651,533	40,250,363	39,679,900
Administrative and Institutional Support	47,894,208	48,864,330	43,453,167	46,435,812	50,462,748	49,543,690	50,073,454
<i>Other Items</i>							
HAM-TMC Library	2,114,700	2,114,700	2,214,700	2,214,700	2,331,383	2,331,383	2,331,383
Scholarships	24,925	24,925	24,925	24,925	24,925	587,881	23,680
Texas/Mexico Border Project	146,915	146,915	146,915	266,915	256,915	144,319	41,181
Texas Advanced Research Programs	399,909	270,000	85,000	29,100	128,071	52,660	29,400
Texas Heart Institute Research Grants	1,830,008	1,830,008	1,830,008	1,811,708	4,311,708	4,130,537	2,353,880
Information Technology Equipment	206,803	113,168	86,406	79,128	72,468		
Institutional Reserves	3,264,642	1,120,006	179,009	179,009	918,731	178,949	664,910
Total Other Items	7,987,902	5,619,722	4,566,963	4,605,485	8,044,201	7,425,729	5,444,434
Grand Total UHealth	\$229,122,624	\$239,446,543	\$231,219,047	\$245,988,808	\$265,234,427	\$249,171,100	\$245,655,864

Total Funds Operating Budget *FY 2009 - 2012*

source: [Vanessa McKeown](#), Office of Budget & Financial Reporting

	FY 2009 Revised	FY 2010	FY 2011	FY 2012
Medical School	\$416,368,363	\$474,107,091	\$517,327,205	\$570,986,744
MSRDP Administration	12,835,195	13,623,153	16,438,586	15,136,334
School of Dentistry	34,038,798	34,726,473	36,182,740	42,601,290
Grad School Biomedical Sciences	6,889,015	7,267,030	7,610,766	7,340,676
School of Biomedical Informatics	5,581,079	9,566,500	10,637,134	12,029,725
School of Nursing	20,547,868	19,349,968	20,547,636	24,348,978
School of Public Health	63,869,671	69,229,132	78,723,152	96,089,562
Institute of Molecular Medicine	11,076,678	10,562,275	8,152,199	5,708,525
Harris County Psychiatric Center	55,036,844	53,858,389	42,147,031	40,641,487
Administrative & Institutional Support	97,498,241	104,876,513	111,559,481	94,452,475
<i>Other Items</i>				
HAM-TMC Library	2,214,700	2,331,383	2,331,383	2,331,383
Scholarships	24,925	24,925	587,881	23,680
Texas/Mexico Border Project	266,915	256,915	144,319	41,181
Texas Advanced Research Programs	29,100	128,071	52,660	29,400
Texas Heart Institute Research Grants	1,811,708	4,311,708	4,130,537	2,353,880
Information Technology Equipment	79,128	72,468		
Institutional Reserves	1,319,753	1,018,731	178,949	664,910
Total Other Items	5,746,229	8,144,201	7,425,729	5,444,434
Auxiliary Enterprises	25,440,506	23,174,044	20,418,641	20,909,877
Other Current Restricted Funds	7,343,597	9,700,445	7,547,294	3,857,779
Grand Total UTHealth	\$762,272,084	\$838,185,214	\$884,717,594	\$939,547,887

Total Funds Operating Budget by Revenue Source FY 2009 - 2012

source: [Vanessa McKeown](#), Office of Budget & Financial Reporting

	FY 2009	FY 2010	FY 2011	FY 2012
State Funds				
General Revenue	\$170,068,798	\$190,017,156	\$169,022,750	\$178,521,810
Local Income		20,984,883	24,036,426	26,711,477
Administrative Recovery				
HCPC Administrative Contract	737,985	737,985	737,985	1,200,000
Prior Year Balance	4,089,027		5,772,680	
Coordinating Board Transfers	29,100	3,128,071	7,622,660	29,400
Tobacco Settlements	3,309,718	3,309,718	3,524,910	3,569,449
HCPC	47,999,973	47,056,614	38,453,689	35,623,728
Total State Funds	226,234,601	265,234,427	249,171,100	245,655,864
Designated Funds	323,146,908	368,616,634	405,305,857	430,968,887
Contract and Grant Funds	132,512,821	144,456,521	171,077,626	187,880,206
Current Restricted Funds	35,183,041	36,703,588	38,744,370	54,133,053
Auxiliary Enterprise Funds	25,440,506	23,174,044	20,418,641	20,909,877
Grand Total UTHealth	\$742,517,877	\$838,185,214	\$884,717,594	\$939,547,887

Total Funds Operating Budget by Unit & Revenue Source FY 2009 - 2012

source: [Vanessa McKeown](#), Office of Budget & Financial Reporting

	FY 2009 Rev.	FY 2010	FY 2011	FY 2012
Medical School				
State Funds	\$72,913,943	\$75,762,482	\$71,957,357	\$69,153,617
Designated Funds	258,871,154	307,925,661	339,368,882	371,984,246
Contract & Grant Funds	80,246,393	87,430,072	104,178,574	114,259,598
Current Restricted Funds	18,312,812	16,612,029	18,260,978	30,725,617
Total MS	430,344,302	487,730,244	533,765,791	586,123,078
School of Dentistry				
State Funds	24,052,942	24,321,436	25,179,434	27,943,307
Designated Funds	6,572,620	6,275,442	6,736,849	8,607,449
Contract & Grant Funds	1,885,267	2,388,390	2,710,354	3,274,259
Current Restricted Funds	1,527,969	1,741,205	1,556,103	2,776,275
Total SOD	34,038,798	34,726,473	36,182,740	42,601,290
Graduate School of Biomedical Sciences				
State Funds	4,068,721	5,486,737	5,773,071	5,826,518
Designated Funds	19,657	19,657	19,043	497,030
Contract & Grant Funds	2,217,024	1,334,338	1,257,639	98,934
Current Restricted Funds	583,613	426,298	561,013	918,194
Total GSBS	6,889,015	7,267,030	7,610,766	7,340,676
School of Biomedical Informatics				
State Funds	3,168,725	5,701,311	5,396,539	4,091,883
Designated Funds	1,005,115	1,240,479	1,526,114	1,089,391
Contract & Grant Funds	1,147,940	1,645,448	2,808,794	3,943,693
Current Restricted Funds	259,299	979,262	905,687	2,904,758
Total SBMI	5,581,079	9,566,500	10,637,134	12,029,725
School of Nursing				
State Funds	10,437,176	9,644,714	9,876,139	11,009,306
Designated Funds	5,824,552	6,125,329	7,256,990	7,480,357
Contract & Grant Funds	2,357,040	2,201,184	2,159,656	2,434,194
Current Restricted Funds	1,929,100	1,378,741	1,254,851	3,425,121
Total SON	20,547,868	19,349,968	20,547,636	24,348,978
School of Public Health				
State Funds	22,472,691	27,924,987	27,466,879	28,414,482
Designated Funds	6,998,958	6,149,527	7,904,385	9,216,500
Contract & Grant Funds	29,770,919	29,449,866	35,039,998	49,374,144
Current Restricted Funds	4,627,103	5,704,752	8,311,890	9,084,436
Total SPH	63,869,671	69,229,132	78,723,152	96,089,562
Institute of Molecular Medicine				
State Funds	6,861,563	7,234,278	6,301,899	4,018,962
Designated Funds	4,215,115	3,327,997	1,850,300	1,689,563
Total IMM	11,076,678	10,562,275	8,152,199	5,708,525
Harris County Psychiatric Center				
State Funds	50,971,750	50,651,533	40,250,363	39,679,900
Designated Funds	3,465,546	3,046,000	1,550,114	520,714
Current Restricted Funds	599,548	160,856	346,554	440,873
Total HCPC	55,036,844	53,858,389	42,147,031	40,641,487
University Administration				
State Funds	46,435,812	50,462,748	49,543,690	50,073,454
Designated Funds	36,174,191	34,506,542	39,093,180	29,883,637
Contract & Grant Funds	14,888,238	20,007,223	22,922,611	14,495,384
Total UA	97,498,241	104,976,513	111,559,481	94,452,475
All Other				
State Funds	4,605,485	8,044,201	7,425,729	5,444,434
Current Restricted Funds	7,343,597	9,700,445	7,547,294	3,857,779
Auxiliary Enterprise Funds	25,440,506	23,174,044	20,418,641	20,909,877
Total Other	37,389,588	40,918,690	35,391,664	30,212,090
Total UTHealth				
State Funds	\$245,988,808	\$265,234,427	4249,171,100	\$245,655,864
Designated Funds	323,146,908	368,616,634	405,305,857	430,968,887
Contract & Grant Funds	132,512,821	144,456,521	171,077,626	187,880,206
Current Restricted Funds	35,183,041	36,703,588	38,744,370	54,133,053
Auxiliary Enterprise Funds	25,440,506	23,174,044	20,418,641	20,909,877
Grand Total UTHealth	\$762,272,084	\$838,185,214	\$884,717,594	\$939,547,887

Total Funds Operating Budget by NACUBO Function FY 2007 - 2012

source: [Vanessa McKeown](#), Office of Budget & Financial Reporting

	FY 2007	FY 2008	FY 2009	FY 2010	FY 2011	FY 2012
State Funds						
Instruction	\$82,304,662	\$69,553,374	\$70,961,195	\$81,254,972	\$79,822,671	\$70,619,813
Research	8,370,576	10,722,462	10,648,502	13,247,473	12,496,435	11,975,812
Public Service	2,284,145	1,967,367	1,435,134	1,152,935	767,756	325,881
Hospitals/Clinics	30,662,958	32,305,606	49,515,632	48,026,938	38,186,163	44,076,373
Academic Support	20,671,005	21,281,123	21,200,131	20,983,069	18,963,486	17,757,716
Student Services	1,518,554	1,442,002	1,293,657	1,709,809	1,624,223	1,506,410
Institutional Support	32,625,967	26,079,539	26,988,173	28,797,594	26,379,417	24,659,265
Physical Plant Maintenance & Operations	21,716,802	27,470,114	17,849,839	21,068,968	19,725,771	24,212,109
Scholarships & Fellowships	24,925	24,925	117,755	24,925	23,680	23,680
Staff Benefits	28,443,778	24,146,254	30,420,890	32,228,367	34,812,229	35,709,434
Tuition Revenue Bond Retirement	9,210,827	13,740,302	13,744,258	13,694,901	13,694,368	12,557,128
Capital Projects	1,612,344	2,485,979	1,813,642	3,044,476	2,674,901	2,232,243
Total State Funds	\$239,446,543	\$231,219,047	\$245,988,808	\$265,234,427	\$249,171,100	\$245,655,864
Designated Funds						
Instruction	\$230,806,455	\$268,599,006	\$274,493,701	\$319,637,990	\$355,648,571	\$395,422,040
Public Service	2,327,181	2,576,030	2,796,745	1,311,167	912,489	1,297,187
Institutional Support	24,205,348	31,838,030	45,856,462	47,667,477	48,744,797	34,249,660
Total Designated Funds	\$257,338,984	\$303,013,066	\$323,146,908	\$368,616,634	\$405,305,857	\$430,968,887
Contract & Grant Funds	\$122,709,000	\$128,525,400	\$132,512,821	\$144,456,521	\$171,077,626	\$187,880,206
Current Restricted Funds	35,907,900	35,916,100	35,183,041	36,703,588	38,744,370	54,133,053
Auxiliary Enterprise Funds	26,247,876	26,589,005	25,440,506	23,174,044	20,418,641	20,909,877
Grand Total UTHealth	\$681,650,303	\$725,262,618	\$762,272,084	\$838,185,214	\$884,717,594	\$939,547,887

Endowment Status *FY 2011*

source: [Lisa Christison](#), Office of Advancement

Type	Status as of August 31, 2011		
	Total Number	Number filled	Percent filled
Distinguished University Chair	7	5	71%
Distinguished Chair	18	11	61%
Chair	39	36	92%
Distinguished Professorship	33	27	82%
Professorship	60	48	80%
Faculty Fellowship	1	1	100%

Endowment Trends *FY 2002 - 2011*

source: [Lisa Christison](#), Office of Advancement

As of Date	Number of Endowments	Book Value	Market Value	Annual % Change in Book Value
August 31, 2002	236	\$56,247,328.74	\$66,638,813.34	21.5%
August 31, 2003	255	61,241,529.08	76,426,418.84	8.9%
August 31, 2004	271	66,483,468.65	88,629,257.05	8.6%
August 31, 2005	296	79,822,207.13	112,841,522.99	20.1%
August 31, 2006	312	87,181,443.77	127,055,406.67	9.2%
August 31, 2007	342	100,097,366.78	153,905,321.67	14.8%
August 31, 2008	372	108,079,832.66	150,848,251.54	8.0%
August 31, 2009	397	111,481,107.77	128,845,537.11	3.2%
August 31, 2010	415	117,496,002.74	143,418,956.02	5.4%
August 31, 2011	424	122,528,972.28	161,583,780.39	4.3%

Voluntary Support *FY 2011*

source: [Lisa Christison](#), Office of Advancement

Source of Cash	Amount Received
Alumni	\$813,485
Parent	\$0
Individual	\$9,548,366
Foundation	\$22,950,969
Corporation	\$4,517,463
Organization	\$4,014,020
Grand Total	\$41,844,303

Capital Equipment Expenditures by Asset Category FY 2002 - 2011

source: [Heidemarie Hellriegel](#), Capital Assets Management

Asset Category Description	FY 2002	FY 2003	FY 2004	FY 2005	FY 2006
Office equipment & furniture	\$196,118	\$291,685	\$206,080	\$104,630	\$49,797
Physical plant & police	326,699	696,808	480,397	193,286	412,753
Audio-visual & media production	1,244,436	508,856	282,513	358,557	1,072,267
Medical, lab, & research	9,026,516	9,165,860	7,353,682	7,858,148	6,454,801
Hospital & patient care	1,003,932	519,801	181,043	173,457	377,285
Instructional, teaching, & library	284,290	70,416	172,467	167,054	24,267
Data processing & computer related	4,875,953	6,429,281	4,126,267	3,773,031	3,782,508
Print shop	3,990	0	0	0	0
Food service	33,440	34,186	28,865	0	5,250
Recreational	166,675	1,767	5,263	0	0
Grand Total	\$17,162,049	\$17,718,660	\$12,836,577	\$12,628,163	\$12,178,927

Asset Category Description	FY 2007	FY 2008	FY2009	FY 2010	FY 2011
Office equipment & furniture	\$222,598	\$103,819	\$1,383,971	\$426,278	\$95,303
Physical plant & police	1,306,921	714,466	136,098	287,277	363,079
Audio-visual & media production	494,748	571,250	719,170	1,383,759	403,433
Medical, lab, & research	8,105,553	6,796,484	12,527,691	8,790,159	7,860,934
Hospital & patient care	363,376	57,193	110,587	139,409	339,254
Instructional, teaching, & library	82,387	68,741	210,314	208,467	211,602
Data processing & computer related	4,505,968	2,706,385	3,156,083	3,225,758	2,790,354
Print shop	0	40,000	0	0	0
Food service	0	13,526	34,865	0	0
Recreational	56,888	23,100	0	10,878	110,919
Grand Total	\$15,138,439	\$11,094,963	\$18,278,779	\$14,471,985	\$12,174,878

Facilities Operating Expenditures (Owned) FY 2009 - 2011

source [Duane Heuer](#), Facilities Operations

Building	Purchased Utilities	Maintenance & Operation	Housekeeping	FY 2011 Total	FY 2009 Total	FY 2010 Total
Cyclotron Facility	\$76,267	\$30,233	\$2,733	\$109,233		
School of Dentistry	1,358,299	506,490	242,011	2,106,800		
Medical School	5,892,459	1,637,509	639,809	8,169,777		
Operations Center	229,319	245,090	118,131	592,540		
Reuel A. Stallones	919,831	443,500	162,331	1,525,662		
University Center Tower	1,000,499	930,860	269,408	2,200,767		
RAHC	140,311	218,021	26,364	384,696		
School of Nursing	374,266	362,682	157,117	894,065		
UT Professional Building	1,034,651	1,180,966	384,767	2,600,384		
Sarofim Research Building	1,434,951	579,777	120,729	2,135,457		
Medical School Expansion	2,227,761	499,697	120,823	2,848,281		
Behavioral & Biomedical Sciences	868,648	586,730	113,592	1,568,970		
Grand Total	\$15,557,262	\$7,221,555	\$2,357,815	\$25,136,632	\$25,6484,061	\$26,795,834

Purchased Utilities FY 2002 - 2011

source [Duane Heuer](#), Facilities Operations

Figures include utilities costs for THI lease space as well as electricity, chilled water, steam, water, sewer, waste collection and natural gas for owned buildings exclusive of South Campus Housing and Recreation Center.

Year	Total Expenditures	Annual % change
FY 2002	\$6,692,979	
FY 2003	\$7,040,439	5.2%
FY 2004	\$7,615,369	8.2%
FY 2005	\$10,127,495	33.0%
FY 2006	\$13,448,565	32.8%
FY 2007	\$14,939,336	11.1%
FY 2008	\$17,612,222	17.9%
FY 2009	\$17,596,603	-0.1%
FY 2010	\$17,338,119	-1.5%
FY 2011	\$15,816,734	-8.8%

Space Inventory by Function *FY 2011*

source [Bret Wandel](#), Facilities Operations

	Assignable Square Feet										Total
	Class-room	Lab	Office	Study	Spec Use	Gen Use	Support	Health Care	Residential	Vacant	
Building V	3,169		5,203								8,372
Stanton Professional Bldg	1,499	430	4,542				277				6,748
Bass Tower 2		153	2,006			118					2,277
South Campus Research Building Three	901	17,248	9,192		393	56					27,791
Aldine Westfield WIC					1,773						1,773
Behavioral & Biomedical Sciences Building		20,543	38,284		8,400	1,163	202	8,553			77,144
Behavioral & Biomedical Service Building			587								587
Basic Science Research Building	3,864		9,320			98					13,282
Child Development Ctr			518		4,643	357	86				5,604
Cyclotron Facility		3,365	3,295								6,661
Denton A. Cooley Bldg		10,367	6,821		496		110			6,669	24,463
Dental Branch Building	7,472	42,762	52,429	6,713	4,676	6,755	12,144	53,706		12,816	199,473
Family Development Ctr					4,896						4,896
Hobby Airport WIC					2,300						2,300
Houston Medical Center		417	19,033		253	233	71	16,233		3,300	39,539
Jesse Jones Library			35,083	118		119	400			236	35,954
Lyndon B. Johnson Annex	3,652	331	3,481	166		337					7,969
Memorial Hermann Medical Plaza			8,062			728		9,297			18,088
Medical School Building	29,691	224,335	167,198	10,072	3,139	26,505	6,245	7,003			474,188
Medical School Expansion		54,845	20,212	813	30,157	2,190	2,802	4,129		101	115,247
North Channel WIC					2,726						2,726
Operations Center Annex			2,822			572	12,156				15,550
Operations Center Building			55,986			2,695	92,466			12,649	163,797
Power Center					2,331						2,331
Social Services Regional Academic	2,532	5,615	12,088		200						20,435
Health Center											
Reuel Stallones Building	13,691	22,714	93,649	8,200	56	11,209	9,959				159,479
Recreation Center			2,960			13,512	75				16,547
Recreation Pool House						848					848
Robertson Pavilion		290	1,917					3,197	47		5,452
Starr County Health Studies								2,112			2,112
Student Faculty Apts			879			1,074	7,124		371,541		380,617
2636 South Loop West	176		3,225					1,205			4,606
Smith Tower Building			878					1,759			2,637
School of Nursing & Student Community Ctr	16,403	20,103	37,020	5,328		14,063	353				93,270
School of Public Health	1,446	1,227	6,707	257							9,638
San Antonio Favez S. Sarofim Research Building		68,477	36,472		14,496	6,750	4,746	1,604			132,544
SON & Community Ctr		1,045					2,157				3,201
Service Building											
Trinity Center Building			3,114			115	399				3,628
TIRR		616	4,101								4,717
University Center Tower & Parking	3,266	26,167	182,853	295	3,287	4,891	389,222	5,305		3,290	618,577

continued **Space Inventory by Function**

	Assignable Square Feet										Total
	Class-room	Lab	Office	Study	Spec Use	Gen Use	Support	Health Care	Residential	Vacant	
University Housing Apartments			949			1,232			194,392		196,573
University Housing Garage							149,258				149,258
University Professional Building		99	83,254			4,316	3,698	128,107		20,149	239,623
University Professional Garage			20,552				588,069				608,621
UT Health Center at Sienna Village			677					7,606			8,283
University of Texas Administration Building	2,086		8,301			256					10,643
University WIC Hillcroft					2,860						2,860
West Loop South Building			1,053					20,596			21,649
Grand Total Assignable Square Feet	89,848	521,149	944,724	31,962	87,081	100,192	1,282,019	270,412	565,981	59,209	3,952,577

Space Inventory by Program *FY 2011*

source [Bret Wandel](#), Facilities Operations

		Assignable Square Feet									Total
		Instruction	Research	Public Service	Academic Support	Student Service	Institution Support	Physical Plant Operations	Independent Operations	Vacant	
Building V	Leased	6,382	1,990								8,372
Stanton Professional Bldg	Leased	5,640	1,108								6,748
Bass Tower 2	Leased	1,646	631								2,277
South Campus Research Bldg Three	Leased	901	17,598		9,291						27,791
Aldine Westfield WIC	Leased			1,773							1,773
Behavioral & Biomedical Sciences Building	Owned	1,015	46,251	8,539	21,137		202				77,144
Behavioral & Biomedical Service Building	Owned						587				587
Basic Science Research Bldg	Leased	3,935			9,347						13,282
Child Development Center	Owned					5,604					5,604
Cyclotron Facility	Owned						6,661				6,661
Denton A. Cooley Building	Leased		10,708		5,469		110	5	1,502	6,669	24,463
Dental Branch Building	Owned	100,664	28,974	7,040	37,476	5,299	2,249	3,503	1,451	12,816	199,473
Family Development Center	Leased			4,896							4,896
Hobby Airport WIC	Leased			2,300							2,300
Houston Medical Center	Leased	7,167	4,581	10,897	6,416				7,177	3,300	39,539
Jesse Jones Library	Leased	4,578	2,141	1,452	25,224		2,216	109		236	35,954
Lyndon B. Johnson Annex	Prtnrshp	4,588	95		3,144		142				7,969
Memorial Hermann Medical Plaza	Leased	6,911		6,380	4,797						18,088
Medical School Building	Owned	95,641	216,930	13,771	114,477	20,691	6,178	3,114	3,385		474,188
Medical School Expansion	Owned	1,470	92,073	66	20,984	52		501		101	115,247
North Channel WIC	Leased			2,726							2,726
Operations Center Annex	Owned						6,666	8,884			15,550
Operations Center Building	Owned		363		13,151		64,442	42,806	30,384	12,649	163,797
Power Center Social Services	Leased			2,331							2,331
Regional Academic Health Center	Owned	9,843	10,592								20,435
Reuel Stallones Building	Owned	68,211	39,304		47,352	2,322		2,290			159,479
Recreation Center	Owned					16,108	439				16,547
Recreation Pool House	Owned					848					848
Robertson Pavilion	Leased		5,452								5,452
Starr County Health Studies	Leased		1,269	844							2,112
Student Faculty Apartments	Owned					380,617					380,617
2636 South Loop West	Leased	176		4,430							4,606
Smith Tower Building	Leased	1,318		1,318							2,637
School of Nursing & Student Community Ctr	Owned	44,101	18,307	128	17,241	6,785	1,120		5,588		93,270
School of Public Health San Antonio	Leased	7,567	2,071								9,638
Fayez S. Sarofim Research Building	Owned	3,030	80,649		42,638		6,227				132,544
SON & Community Ctr Service Bldg	Owned	89	956				2,157				3,201
Trinity Center Building	Leased	162	3,466								3,628
TIRR	Leased		2,510	178	2,030						4,717
University Center Tower & Parking	Owned	14,242	51,375	5,421	13,597	201,021	289,815	7,537	32,280	3,290	618,577
University Housing Apartments	Owned					196,573					196,573
University Housing Garage	Owned					149,258					149,258

continued **Space Inventory by Program**

		Assignable Square Feet						Physical Plant	Independent	Vacant	Total
		Instruction	Research	Public Service	Academic Support	Student Service	Institution Support	Operations	Operations		
University Professional Bldg	Owned	50,514	4,289	49,926	34,600	2,768	17,768		59,609	20,149	239,623
University Professional Garage	Owned					294,034	294,034		20,552		608,621
UT Health Center at Sienna Village	Leased	4,142		4,142							8,283
University of Texas Administration Building	Leased	7,688	2,955								10,643
University WIC Hillcroft	Leased			2,860							2,860
West Loop South Building	Leased	10,824		10,824							21,649
Grand Total Assignable Square Feet		462,444	646,635	142,242	428,373	1,281,981	701,014	68,750	161,929	59,209	3,952,577